

# Meter Reading Instructions

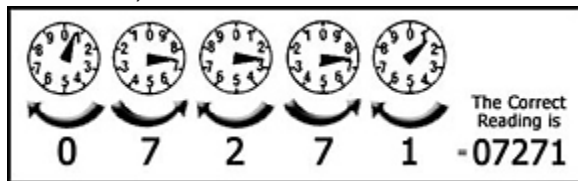
Please choose the image that looks most like your meter and follow the directions listed.

---

## Reading Electric Meter (with Dials)



If your meter has 4 or 5 dials as shown here, record the number the dial is pointing towards. When the pointer on a dial is between two numbers, **read the smaller number**. If a dial is too close to tell if it has reached the higher number, *look at the next dial to the right*. If the pointer on that dial has passed zero, then you should record the higher number; otherwise, record the lower number.



## Reading Electric Meter (with Mechanical Digits)



If you have an electric meter with 4 or 5 scrolling numbers (not dials) and it looks similar to this one, simply read the numbers as normal and record your numbers on our [meter reading form](#).

---

## Reading Electric Meters (with Digital Digits)



Displays on digital meters may flash back and forth between 88888 and the meter reading. If you have a digital electric meter as pictured, simply read the numbers as normal and record your numbers on our [meter reading form](#).

---

## Reading Water Meters

In addition to the number on the scrolling digits, you will also need your meter number. Your meter number will be on a blue sticker.



Your water meter reading will consist of 5 to 7 numbers. Simply read the numbers as normal and record your numbers on our [meter reading form](#) under the *Water Meters Reading* section.

NOTE: If your water meter consists of only 5 or 6 numbers enter a 0 for the first and/or second digit starting from the left.