



Working Together for a
Better Tomorrow. Today.

BID SPECIFICATION PACKAGE

for

PRECIPITATOR, BOTTOM ASH AND BOILER INDUSTRIAL CLEANING – FALL 2024 OUTAGE

C 133888

Bid Opening Date/Time

Tuesday, August 13, 2024 at 2:00 p.m.
City of Grand Island, City Hall
100 East 1st Street, P.O. Box 1968
Grand Island, NE 68802-1968

Contact Information

Tylor Robinson
City of Grand Island – Utilities Department
Platte Generating Station
Email: trobenson@giud.com
Phone: 308/385-5496

Date issued: July 26, 2024

**ADVERTISEMENT TO BIDDERS
FOR
PRECIPITATOR, BOTTOM ASH AND BOILER INDUSTRIAL CLEANING-FALL 2024 OUTAGE
CITY OF GRAND ISLAND, NEBRASKA**

Sealed bids for Precipitator, Bottom Ash and Boiler Industrial Cleaning-Fall 2024 Outage will be received at the office of the City Clerk, 100 E. First Street, P.O. Box 1968, Grand Island, Nebraska 68802, until **Tuesday, August 13, 2024 at 2:00 p.m. local time**, FOB the City of Grand Island, freight prepaid. Bids will be publicly opened at this time in the Grand Island City Hall City Clerk's Office located on 1st floor of City Hall. **Submit an original and two copies if submitting by mail.** Bid package and any Addendas are also available on-line at www.grand-island.com under Business-Bids and Request for Proposals-Bid Calendar under the bid opening date. Bidding documents, plans and specifications for use in preparing bids may be downloaded from the QuestCDN website www.QuestCDN.com for a \$42.00 fee. Submitting through QuestCDN requires one original document of the bid to be uploaded. **Bids received after the specified time will not be considered.**

The successful bidder will be required to comply with fair labor standards as required by Nebraska R.R.S.73-102 and comply with Nebraska R.R.S. 48-657 pertaining to contributions to the Unemployment Compensation Fund of the State of Nebraska. Successful bidder shall maintain a drug free workplace policy. Every public contractor and his, her or its subcontractors who are awarded a contract by the City for the physical performance of services within the State of Nebraska shall register with and use a federal immigration verification system to determine the work eligibility status of new employees physically performing services within the State of Nebraska.

Each bidder shall submit with the bid a certified check, a cashiers check, or bid bond payable to the City of Grand Island Treasurer in an amount no less than five percent (5%) of the bid price which shall guarantee good faith on the part of the bidder and the entering into a contract within fifteen (15) days at the bid price if accepted by the City. **Your certified check, cashiers check or bid bond must be submitted in a separate envelope attached to the outside of the envelope containing the bid.** **Each envelope must be clearly marked indicating its contents. Failure to submit the necessary qualifying information and correct number of copies in clearly marked and separate envelopes will result in your bid not being opened or considered.** Only surety companies authorized to do business in the State of Nebraska may issue bid bonds.

Bids will be evaluated by the Purchaser based on price, schedule, quality, adherence to schedule, plan and specifications, economy and efficiency of operation, experience and reputation of the bidder, ability, capacity, and skill of the bidder to perform contract required and adaptability of the particular items to the specific use intended.

The Purchaser reserves the right to reject any or all bids, to waive irregularities therein, and to accept whichever bid that may be in the best interest of the City, at its sole discretion.

No bidder may withdraw his/her bid for a period of thirty (30) days after date of bid opening.

Jill Granere, City Clerk

Advertised

(All bids must be submitted on this form)

**PRECIPITATOR, BOTTOM ASH AND BOILER INDUSTRIAL
CLEANING - FALL 2024 OUTAGE
BID DATA FORM**

CITY OF GRAND ISLAND
GRAND ISLAND, NE

THE undersigned Bidder, having examined the plans, specifications, general and special conditions, and other proposed contract documents, and all addenda thereto, and being acquainted with and fully understanding all conditions relative to the location, arrangement and specified materials and equipment for the proposed work, HEREBY proposes to provide all necessary supervision, materials, equipment and labor to provide industrial cleaning services at Platte Generating Station consisting of rodding and vacuum in the reheat and superheat pendants, high pressure water blasting in the Bottom Ash system, and vacuum cleaning through the power station, FOB the City of Grand Island, freight prepaid, at the following price:

<u>ITEM DESCRIPTION</u>	<u>EXTENDED COST</u>
Base Bid: **	
Material	\$ _____
Labor	\$ _____
Applicable Sales tax*	\$ _____
Total Base Bid	\$ _____

****Bidder shall submit a bid breakdown as defined in Section 3.1 of the Detailed specification on a separate sheet, clearly marked and included as a supplement with the above bid.**

* If bidder fails to include sales tax in their bid price or takes exception to including sales tax in their bid price, the City will add a 7.5% figure to the bid price for evaluation purposes; however, the City will only pay actual sales tax due.

Exceptions Noted - Bidder acknowledges there are *Exceptions* and/or *Clarifications* noted to the above bid, and those exceptions are fully explained on a separate sheet, clearly marked, and included with the Bid.

Bidder Company Name Date

Company Address City State Zip

Print Name of Person Completing Bid Signature

Email: _____ Telephone No. _____

According to Nebraska Sales and Use Tax Requirements, Section 1-017, Contractors, check which option you have selected to file with the Nebraska Department of Revenue:

Nebraska law provides a sales and use tax exemption on contractor labor charges for the construction, repair, or annexation of any structure used for the generation, transmission, or distribution of electricity. Separately stated contractor labor would be exempt, all materials are taxable according to the contractor's option.

Option 1 (Section 1-017.05) _____ Option 2 (Section 1-017.06) _____ Option 3 (Section 1-017.07) _____

If the Nebraska sales and use tax election is not filed or noted above, the contractor will be treated as a retailer under Option 1 for sales and use tax purposes.

By checking this box, Bidder acknowledges the Fall maintenance outage is scheduled from September 26, 2024 to October 12, 2024 and work must be completed during this timeframe.

By checking this box, Bidder acknowledges that Addenda Number(s) _____ were received and considered in Bid preparation.

Note: If Bidder supplies individual unit pricing information as supplemental pricing to the base material and labor cost above, said individual pricing is proprietary information and should not be released under a public records request. The total base bid is not considered proprietary information and will be released pursuant to City Procurement Code.

The City reserves the right to reject any bid section(s) submitted by the successful bidder. In submitting the bid, it is understood that the right is reserved by the City to reject any and all bids; to waive irregularities therein and to accept whichever bid that may be in the best interest of the City. It is understood that this bid may not be withdrawn by the bidder until after thirty (30) days from bid opening.

In submitting the bid, the bidder acknowledges the bid guarantee will be forfeited to and become the property of the City of Grand Island, Nebraska, as liquidated damages should this bid be accepted and a contract be awarded to them and they fail to enter into a contract in the form prescribed and to furnish the required bonds within fifteen (15) days, but otherwise the aforesaid bid guarantee will be returned upon signing the Contract and delivering the approved bonds.

Insurance: Bidder acknowledges that their bid includes compliance with the attached insurance requirements.

The Bidder agrees to furnish the required performance and payment bond and to enter into a contract within fifteen (15) days after acceptance of this Bid, and further agrees to complete all work covered by the foregoing bid in accordance with specified requirements. No work shall commence until the Certificate of Insurance and bonds (when required) are approved by the City and the Contract is executed. The proposed work can commence after the Contract is signed and the required bond is approved.

End of Bid Data Form

REQUEST FOR BIDS - GENERAL SPECIFICATIONS

The Bid shall be in accordance with the following and with all attached BID DATA and DETAILED SPECIFICATIONS.

All prices are to be furnished and installed FOB, Grand Island, Nebraska. **All prices shall be firm, and shall include all sales and use taxes as lawfully assessed under laws and regulations of the State of Nebraska.** * If bidder fails to include sales tax in their bid price or takes exception to including sales tax in their bid price, the City will add a 7.5% figure to the bid price for evaluation purposes; however, the City will only pay actual sales tax due.

Mailed bids shall include the following on the **outside** of the mailing envelope: **“Precipitator, Bottom Ash and Boiler Industrial Cleaning-Fall 2024 Outage”**. All bids submitted by mail must include **an original and two copies** of the bid. The bid specification and on-line bidding forms are also available at <http://www.grand-island.com/business/bids-and-request-for-proposals/bid-calendar> under the bid opening date and “Click here for bid document link” through QuestCDN for a \$42.00 fee. If submitting through QuestCDN, **one** original document of the bid is required to be uploaded. No verbal bids will be considered. All sealed bids are due no later than **Tuesday, August 13, 2024 at 2:00 p.m. local time.** to:

Mailing Address: City Clerk
City Hall
P. O. Box 1968
Grand Island, NE 68802-1968

Street Address: City Clerk
City Hall
100 E. First Street
Grand Island, NE 68801

Bids will be opened at this time in the City Hall City Clerk’s Office located on 1st floor of City Hall. Any bid received after the specified date will not be considered.

Bids will be evaluated by the Purchaser based on price, schedule, quality, adherence to schedule, plan and specifications, economy and efficiency of operation, experience and reputation of the bidder, ability, capacity, and skill of the bidder to perform contract required and adaptability of the particular items to the specific use intended.

The successful bidder will be required to comply with fair labor standards as required by Nebraska R.R.S.73-102 and comply with Nebraska R.R.S. 48-657 pertaining to contributions to the Unemployment Compensation Fund of the State of Nebraska. Contractor shall maintain a drug free workplace policy. Every public contractor and his, her or its subcontractors who are awarded a contract by the City for the physical performance of services within the State of Nebraska shall register with and use a federal immigration verification system to determine the work eligibility status of new employees physically performing services within the State of Nebraska.

The equipment and materials must be new, the latest make or model, unless otherwise specified. Prior to approving the invoice for payment, the City reserves the right to thoroughly inspect and test the equipment to confirm compliance with specifications. Any equipment or material which does not meet the City's requirements will be returned at vendor's expense for correction. The invoice will be paid after approval at the next regularly scheduled City Council meeting and occurring after departmental approval of invoice; the City Council typically meets the second and fourth Tuesday of each month. Invoices must be received well in advance of Council date to allow evaluation and processing time.

Each bidder shall submit with the bid a certified check, a cashier's check, or bid bond payable to the City of Grand Island in an amount no less than five percent (5%) of the bid price which shall guarantee good faith on the part of the Bidder and the entering into a contract within fifteen (15) days at the bid price if accepted by the City. **Your certified check, cashier's check or bid bond must be submitted in a separate envelope attached to the outside of the envelope containing the original bid.** Each envelope must be clearly marked indicating its contents. **Failure to submit the necessary qualifying information and correct number of copies in clearly marked and separate envelopes will result in your bid not being opened or considered.** Only surety companies authorized to do business in the State of Nebraska may issue bid bonds.

Successful bidder shall comply with the City's insurance requirements; All bids shall be valid for at least thirty (30) working days after the bid deadline for evaluation purposes.

All bids must be on the bid form and must be signed and dated to be accepted. If exceptions and/or clarifications are noted to the bid, those exceptions must be fully explained on a separate sheet, clearly marked, and included with the Bid. Any changes that are found made to the original bid specification, other than Owner generated Addendums, would result in your bid not being considered. Please contact Tylor Robinson at 308-385-5495 or email trobins@giud.com for questions concerning this specification.

PRECIPITATOR, BOTTOM ASH AND BOILER INDUSTRIAL CLEANING

Fall 2024 Outage Grand Island Utilities Department - Detailed Specification

- 1.0 PROJECT DESCRIPTION 3
 - 1.1 Background 3
 - 1.2 Location 4
 - 1.3 Contact..... 4
- 2.0 SCOPE 4
 - 2.1 General 4
 - 2.2 Hydro Blasting 5
 - 2.3.1 Lime Slurry Tank..... 5
 - 2.3.2 Swirl Vanes..... 6
 - 2.3.3 Spray Dry Absorber 6
 - 2.3.5 Bottom Ash System..... 6
 - 2.3.6 Miscellaneous Piping and Drains 7
 - 2.3 Vacuum Services 7
 - 2.3.1 Lime Slurry Tank..... 7
 - 2.3.2 Precipitator 7
 - 2.3.3 Ductwork and Hoppers 7
 - 2.3.4 Economizer 8
 - 2.3.5 Air Heater..... 8
 - 2.3.6 Cooling Tower Basin 8
 - 2.3.7 Bottom Ash System..... 8
 - 2.3.8 FGD Byproduct Silo 8
 - 2.3.9 Additional Vacuum Cleaning..... 8
 - 2.4 Alternative Services..... 9
 - 2.5 Inspection..... 9
 - 2.6 Schedule 9
 - Day 1 9
 - Day 2 9
 - Day 3 9

Day 4	9
Day 5	9
Day 6	9
Day 7	9
Day 8	9
3.0 BIDDING	10
3.1 Unit Pricing	10
3.1.1 FGD Byproduct Silo	10
3.1.2 Hydro Blasting Services	10
3.1.3 Vacuuming Services	10
3.2 Rates	10
3.2.1 Terms and Conditions	11
3.2.2 Time and Material Accounting	11
3.3 Terms and Conditions	11
3.2 Deviations	12
3.3 Change Orders	12
3.3.1 Time and Material Accounting	12
3.4 Terms and Conditions	13
3.5 Exceptions	13
4.0 QUALIFICATIONS	13
4.1 Superintendent	13
5.0 SAFETY	13
6.0 INSURANCE	14
7.0 PERFORMANCE AND PAYMENT BOND	14
8.0 DRAWINGS AND SITE INFORMATION	14
9.0 ATTACHMENTS:	14

PRECIPITATOR, BOTTOM ASH AND BOILER INDUSTRIAL CLEANING

Fall 2024 Outage

Grand Island Utilities Department - Detailed Specification

1.0 PROJECT DESCRIPTION

1.1 Background

The Unit 1 steam generator is a tangential fired, natural circulation, superheat/reheat, pulverized coal-fired boiler manufactured by ABB-CE (CE Contract No. 13477). The steam generator produces 765,000 lb/hr (MCR) of steam at 1000 F and 1800 psi which is delivered to a 100,000 kW steam turbine. The unit uses Powder River Basin Coal from various mines in the basin. Flue gas from the boiler is contained in a series of ducts that funnel it through the air heater, precipitator and spray dry absorption system. Buildup of ash and other combustion materials periodically need to be cleaned from the flue gas path.

The electrostatic precipitator is a hot-side precipitator designed by Joy-Western Precipitator, and is described as follows:

Discharge Electrodes	7120
Collecting Plates	640
Plate Size	9' x 30'
Ash Hoppers	15 (12 Precipitator and 3 Economizer)
Overall Height	36' (excluding hoppers)
Overall Width	97'
Distance from Grade	62' (to top of precipitator hoppers)

The air heater is a vertical post, rotary regenerative air heater, air-to-flue gas heat exchanger manufactured by Ljungstrom Air Preheater Company, Model# 27-VI-90 serial # 6765 manufactured by ABB-CE, Contract No. 13477. It is located in the flue gas path between the precipitator and the induced draft fan, and in the air path between the forced draft fan and wind boxes.

Additional specifications are as follows:

Heating element hot end	#24 gauge, 42" deep
Heating element intermediate	#24 gauge, 36" deep
Heating element cold end	#18 gauge, 12" deep
Radial seals hot end	Rotabrush Adaptive Brush Seal
Radial seals cold end	#16 gauge stainless steel
Diameter	29'- 6"
Rotating speed w/ electric motor	1 – 1.5 rpm
Rotating speed w/ air drive	Variable, approx. 0.5 rpm
Height above grade elevation	Approximately 53'

The Spray Dry Absorption (SDA) vessel is a vertical silo used to enhance the interaction of the flue gas stream, along with a fine spray of reagent slurry droplets in a manner which promotes chemical absorption of sulfur dioxide by the droplets and results in a drying of the spent reagent to a particulate

suspended in the desulfurized flue gas stream. The SDA vessel, previously coated in the Fall of 2017, needs to be inspected.

The areas to be inspected on the Platte Generating Station Spray Dry Absorber vessel include:

- 47' tall x 42' dia main cylinder interior
- 36' tall hopper interior tapered from 42' diameter to a 2' diameter base outlet valve
- 42' diameter ceiling interior less the 3 – 8'-71/2" diameter atomizer holes in roof and less the equipment inside the atomizer hole boundaries
- 10'-6"w x 10'-6"h x 10'-10" deep exit duct from the SDA hopper including all interior duct surfaces and all surfaces exposed to the flue gas where the duct is inside the SDA.
- The interior surface of all access doors and attachments

1.2 Location

The Platte Generating Station is located at 1035 W. Wildwood Drive, two (2) miles south of Grand Island, Nebraska. The plant entrance is located two (2) miles south of U.S. Highway 34 and 1 ½ miles east of U.S. Highway 281.

1.3 Contact

Question regarding this specification may be directed to:

Tylor Robinson
Platte Generating Station
1035 W. Wildwood Dr.
Grand Island, NE 68801
Ph. (308) 385-5495
trobinson@giud.com

2.0 SCOPE

2.1 General

Platte Generating Station has a Fall maintenance outage scheduled from **September 26, 2024 to October 12, 2024**. All work completed under this contract is expected to commence on Day 1, September 26, 2024. All work shall be completed on a 1-7-10 work schedule starting 7:00 AM.

The Contractor shall provide all necessary supervision, materials, equipment, and labor to provide industrial cleaning services at the Platte Generating Station (PGS). This scope will generally consist of rodding and vacuum in the reheat and superheat pendants, high pressure water blasting in the Bottom Ash System, and vacuum cleaning throughout the power station.

Platte Generating Station (PGS) will provide:

- An owner's designated representative for on-site coordination with PGS.
- Safety orientation for all contractor employees as related to PGS site safety considerations.
- Dumpsters for trash and debris.
- Portable toilet facilities with hand wash stations.
- Potable water source for contractor's drinking water containers.
- Designated contractor parking on site.
- Electrical service connections for job trailers and equipment.
- The bottom ash system will be open and inspected by plant personnel for contractor to clean.

There is no separate contractor entrance at the Platte Generating Station. There is one gate with a card access security system and the Contractor may request to use access cards to gain entry rather than request entry and exit each trip. There is a \$25.00 charge for all access cards that are not returned.

This contract will be awarded to a single prime Contractor for the full scope of services. The Contractor shall provide a qualified Superintendent who shall be responsible for coordinating all aspects of the specified scope of work, including coordination of all work provided by such subcontractors as may be utilized by the prime Contractor and coordination with other work in progress performed by PGS and such other contractors as may be on site.

Contractor will coordinate closely with PGS personnel on execution of all phases of the work and all safety requirements, including but not limited to:

- Provide information on all employees arriving at PGS
- Lock Out/Tag Out
- Confined Space Entry
- PGS Equipment Operation, such as fans and dampers
- Scheduling sequence of work scope items and related plant system preparations for work execution
- Inspections of completed work

No ash or diesel fuel will be permitted to be spilled on equipment, structures, plant site grounds, or roads. The contractor shall maintain its equipment in top working condition to eliminate fluid leaks and equipment breakdowns that could delay the progress of the work. The contractor is responsible for having on site the capability to take any and all extraordinary measures to fully contain and clean up any and all leaks from the contractor's equipment as well as to implement any and all necessary repairs to equipment as required to eliminate and avoid such leaks from further occurrence. The Contractor is responsible for cleanup of all spilled ash and any diesel fuel spilled from equipment fueling operations. Upon completion, the Contractor shall leave the premises in a neat and clean condition with respect to his own operation. All unused materials shall remain the property of the Contractor and will be removed by the Contractor on demobilization from the site.

2.2 Hydro Blasting

Tools needed for the hydro blast work include but are not limited to:

A minimum of two (2) high pressure, high volume water pumps and blasting systems capable of a minimum 20 gpm at 20,000 psi and a minimum 100 gpm at 10,000 psi, BJV blasting nozzles, 1" pipe nozzle, 6" pipe nozzle, 200' of blasting hose, supply hose from truck to foot pedal, and shot gun blaster. Rodding equipment suitable for removal of the ash and slag in designated areas.

The Contractor's pumping equipment shall have the full pressure and flow capabilities required to provide an effective cleaning of the hard ash buildups.

2.2.1 Lime Slurry Tank

The Spray Dry Absorber lime slurry tank will have a layer of lime crusted on the interior surface of the tank. The Contractor's hydro blast crew will be tasked with manually hydro jetting the interior of the lime slurry tank. Access to the tank is through a hatch at the base

of the tank. The Contractor will be required to hydro vac the tank before gaining access to the interior of the tank.

2.2.2 Swirl Vanes

The Spray Dry Absorber and three Swirler Vanes at the top of the SDA periodically get plugged up with lime ash. The Contractor's hydro blast crew will be tasked with manually hydro jetting those vanes and the transition duct above the vanes with lower pressure handheld wands. Access to the vanes is through the SDA inlet duct at the top of the SDA. The plant will have a dumpster with a liner located at the bottom of the SDA to catch lime ash and water from the cleaning process.

2.2.3 Spray Dry Absorber

The internal surfaces of the Spray Dry Absorber were coated in the Fall of 2017, which requires an inspection. This requires removal of the lime deposits from all internal surfaces of the SDA before turning the vessel over to the inspection service.

The Contractor shall perform a low-pressure water wash of the SDA vessel using the sites fire protection system and a fire hose. In order to protect the coating, under no circumstances can the water pressure be greater than 4000 psi. The goal is to clean all the lime deposits from the inside surfaces in a **12-hour shift** or less, using as little water as possible due to the fact that there is no wastewater drainage under the SDA. The Owner shall place a lined roll off under the SDA to catch all of the lime wastewater and scale. The Contractor shall use a vacuum truck to remove the lime laden wastewater from the roll off and transport it to a temporary on-site holding cell.

The SDA cleaning may not begin until the Precipitator blasting is complete, the SDA inlet dampers are isolated and locked out, the duct between the SDA and the Fabric filter has been cleaned and vacuumed out and the Fabric Filter dampers and bypass damper isolated and locked out.

2.2.4 Bottom Ash System

The bottom ash system consists of the items listed below. Each area shall be inspected and determined if cleaning is needed by plant personnel.

- Settling and surge and pump manifolds on top of dewatering bins.
- Upper, middle, and lower dewatering bin screens and tank walls.
- Drip pans at bottom of both bins.
- Lower dewatering legs.
- Bottom ash hopper fluting lines.
- Bottom ash hopper water boxes.
- Slope flush headers to bottom ash hoppers.
- Low pressure ash sluice line suction and supply lines from pump to building, header at bottom of boiler on seal trough, and before seal trough.
- Surge and settling tank sludge return in bottom ash building.
- Flushing header at the bottom of the boiler.
- Dewatering bin drain lines.
- Slope nozzle legs if needed (both hoppers).

2.2.5 Miscellaneous Piping and Drains

The plant miscellaneous piping and drains shall consist of, but not be limited to, the below listed items. Each area shall be inspected and determined if cleaning is needed by plant personnel.

- Fan room drains out to manhole.
- Bottom ash floor drains to manhole.
- Mechanical exhaust room drain.
- Blow down tank drain header to manhole.
- Floor drains that are plugged.
- Bottom ash sluice line drain to bottom ash sump.
- Air heater hot side gas hoppers to manhole (which will need to be done before water blasting air heater).
- Manhole by precipitator transformers to surge tank overflow manhole.
- Mechanical exhaust room floor drain to bottom ash drains.
- Base of the exhaust stack

2.3 Vacuum Services

The contractor will be required to provide vacuum truck service to the plant. Vacuum services shall consist of wet and dry vacuum services. Vacuum trucks shall be industrial vacuum loaders with the following specifications:

- Max Vacuum: 28 in HG
- Max Airflow: 5250 CFM
- Debris Body: 18 Cubic Yard

The contractor shall provide a minimum of two (2) vacuum trucks continuously operating for the full length of the contract. **Each vacuum truck shall be operated by a crew of four (4) people.** Vacuuming services shall be provided to support plant personnel and contracting personnel detailed in this specification. Material collected in the vacuum trucks shall be transported to a designated containment area.

2.3.1 Lime Slurry Tank

The Contractor shall vacuum all remaining lime slurry from the lime slurry tank and transport it to a designated on-site containment area. Any slurry mixture spilled by the Contractor shall be fully cleaned by the Contractor.

2.3.2 Precipitator

The Contractor shall vacuum all accumulated ash and media from the precipitator, precipitator hoppers, gas outlet and inlet flue areas, and other areas of work performed by the Contractor as described herein and dispose into on-site disposal areas. Any ash which is spilled by the Contractor onto the precipitator building floor or surrounding areas shall be fully cleaned by the Contractor. There are clean-out taps connected to the precipitator hoppers and ash removal lines.

2.3.3 Ductwork and Hoppers

Vacuum work in the ducts shall generally consist of removing all ash from all boiler hot air ducts and boiler gas ducts. Attention shall be paid to all expansion joints and any areas indicating a possible leak in the duct work. These areas shall include, but not be limited to:

- Precipitator outlet plenum to air heater gas inlet.

- Fly ash collects on the gas distribution devices, perforated plates and zig zag plates within the inlet and exit transition sections of the precipitator and accumulates on the sloped floors. Whereas all of the distribution plates must be blast cleaned, the Contractor shall be responsible for staging and coordinating the vacuum work in these areas accordingly. The inlet and outlet transitions shall have all ash removed and the gas passages of the distribution plates shall be 100% opened and free of ash accumulations.
- The economizer ash hoppers and economizer gas exit duct work to each of four (4) precipitator inlet ducts and inlet nozzles up to the zig zag inlet distribution plates.
- Air heater gas outlet hoppers.
- Air heater air side exit through wind box, to each aux air corner duct, and through each horizontal duct to up to the vertical drop for each mill.
- Flue gas exit duct from the ID fan to the SDA. Ash and carbon build up in the guide vanes and horizontal duct upstream of the SDA inlet dampers.
- One (1) SDA Hopper
- Flue gas duct from the SDA to the Fabric Filter.
- Six (6) fabric filter Hoppers.

2.3.4 Economizer

The contractor shall vacuum all debris and ash that collects in the economizer boiler tubes and economizer ash hoppers. While rodding the superheat and economizer tubes, wire screens shall be put in place to collect falling debris. Vacuums shall be used to remove accumulating debris as it collects on the screens.

2.3.5 Air Heater

The Contractor shall vacuum debris and ash that collect during the air heater hydro blasting. The Contractor shall provide sufficient vacuum services to allow for continuous washing of the air heater and prevent plugging of the air heater hoppers and drainage system.

2.3.6 Cooling Tower Basin

The cooling tower basin will be cleaned and washed by plant personnel. The wastewater from the basin shall be vacuumed out by the contractor and transported to a designated containment area on the site.

2.3.7 Bottom Ash System

Vacuum support will be required to hydro blast the Bottom Ash System. This will include emptying the dewatering bins, settling tank, and surge tank. The bottom ash sump pit and hopper areas will also be vacuumed out to remove all slag build up.

2.3.8 FGD Byproduct Silo

The Contractor shall provide vacuum support service to vacuum the remaining material from the Flue Gas Discharge (FGD) silo. The silo is 27' in diameter and 34' tall with a cone bottom. The level in the silo will be approximately 15 feet. Flue gas discharge is a byproduct of the air quality control system. The contractor shall use appropriate PPE and follow proper confined space protocols when entering the silo. See attached SDS and material analysis.

2.3.9 Additional Vacuum Cleaning

The Contractor shall provide support to additional wet and dry vacuum efforts typically occur during the outage, such as:

- Lime Slurry Tank
- Boiler Penthouse floors and dead air spaces in the upper boiler arch
- The blowdown tank will be power washed and vacuumed out
- Coal Piping and boiler grating

2.4 Alternative Services

If the Contractor proposes alternative cleaning methods for consideration by the Owner other than as generally described herein for any portion of the work, full and complete descriptions must be included with the bid with separate pricing for the optional utilization of such proposed methods. References where the system has successfully been used must be included.

2.5 Inspection

All work performed by the Contractor will be inspected by the owner’s designated representative or other assigned plant personnel upon notification by the Contractor that the Contractor considers that portion of the work to be completed. The Contractor will be required to re-clean any areas in which bare metal cleanliness was not achieved, ash accumulations remain, or are deemed unsuitable by the plant representative.

2.6 Schedule

Day 1	<ul style="list-style-type: none"> • PGS unit is scheduled to be taken off-line at approximately 10:00 AM • Contractor shall arrive on site at 7:00 AM. • Set up vacuum for wet vac at cooling tower • Set up vacuum for Precipitator Hoppers
Day 2	<ul style="list-style-type: none"> • Vacuum Precipitator Hoppers • Setup Vacuum for boiler nose, penthouse, reheat and superheat sections
Day 3	<ul style="list-style-type: none"> • Rod reheat and superheat sections • Vacuum boiler nose, penthouse, reheat and superheat sections • Hydro blast and clean bottom ash system.
Day 4	<ul style="list-style-type: none"> • Complete Hydro blast and clean bottom ash system. • Setup Wash in SDA Vessel, layout containment under vessel. • Vacuum duct work from the outlet of the precipitator to air heater. • Vacuum duct work from ID fan to SDA inlet, duct between SDA Vessel and baghouse.
Day 5	<ul style="list-style-type: none"> • Wash SDA Vessel. • Vacuum economizer and misc. boiler areas. • Vacuum economizer hoppers and inlet ducts to the precipitator.
Day 6	<ul style="list-style-type: none"> • Clean Misc. Piping and Drains. • Vacuum duct work from ID fan to SDA inlet, duct between SDA Vessel and baghouse.
Day 7	<ul style="list-style-type: none"> • Vacuum FGD Biproduct Silo • Clean air heater drains. • Clean Misc. Piping and Drains. • Clean Base of Stack. • Clean Misc. Boiler Areas.
Day 8	<ul style="list-style-type: none"> • Clean air heater drains. • Clean Misc. Piping and Drains. • Clean Misc. Boiler Areas.

3.0 BIDDING

The Contractor shall include in his bid a lump sum not-to-exceed estimate of all costs associated with the scope of work herein. Including, but not limited to all expenses, equipment, labor, mobilization and demobilization, and subcontractors. Please ensure that all bids contain the following as a minimum:

Bids will be evaluated by the Owner based on price, schedule, quality, economy of operation, experience of contractor, and adherence to specification. The primary evaluation factor will be the lump sum price. The owner reserves the right to reject any or all bids or waive informalities and to accept whichever bid that may be in the best interest of owner, at its sole discretion. The owner reserves the right to accept portions of the bid while disregarding portions that the purchaser deems unnecessary. **Bids must be received by 2:00 P.M. Tuesday, August 13th, 2024.**

Bidder is solely responsible for obtaining any clarifications to this specification as may be required for the Bidder to submit an accurate and complete bid proposal.

3.1 Unit Pricing

The Contractor shall include a bid breakdown in the bid submission. The bid breakdown shall be formatted with the following unit pricing.

3.1.1 FGD Byproduct Silo

A firm, lump sum fixed price for vacuuming services including any and all costs associated with emptying the FGD byproduct silo including, but not limited to, all expenses, equipment, travel and mileage, per diems, labor, mobilization and demobilization, setup and teardown of equipment, subcontractors, tooling and sundries.

3.1.2 Hydro Blasting Services

A lump sum, time and material, price based on forty-eight (50) service hours of all-inclusive water blasting services including any and all costs associated with the High-Pressure water blast cleaning and line cleaning portion of the work including, but not limited to, all expenses, equipment, travel and mileage, per diems, labor, mobilization and demobilization, subcontractors, supplies, fuel surcharges, and sundries. Daily Time Sheets and job logs must be completed to accurately document the service hours. Separate T&M costs shall be provided that represents the variable cost adjustment for more or fewer service hours from the base 50 hours.

3.1.3 Vacuuming Services

A lump sum, time and material, price for two (2) vacuum trucks working simultaneously for Ninety Six (90) service hours each including any and all costs associated with the Vacuum Cleaning Services portion of the work including, but not limited to, all expenses, equipment, travel and mileage, per diems, labor, mobilization and demobilization, subcontractors, set up and tear down of equipment, supplies, fuel surcharges and sundries. **Each vacuum truck shall be operated by a crew of four (4) people.** Daily Time Sheets and job logs must be completed to accurately document the service hours. Separate T&M costs shall be provided that represents the variable cost adjustment for more or fewer service hours from the base 90 hours of operation. The contractor shall log run hours on vacuuming equipment daily.

3.2 Rates

The Bid shall include, as a separate T&M rate attachment, firm unit pricing for all labor, equipment, fuel surcharges, sundries **and expenses reflecting the charges to be used in billing the T&M portions**

of the work as well as for making any adjustments that may be required for new work scope additions, additional services other than what is required in this specification or reductions in the same. All travel time and per diems shall be included in the hourly labor rates. The City of Grand Island will not be responsible for travel expenses to and from plant site. The City of Grand Island will not be responsible for any associated overnight expenses.

3.2.1 Terms and Conditions

Provide all other proposed terms and conditions which will be in effect during the performance of the work as a separate attachment **with the bid**. Any exceptions the bidder wishes to take regarding the Owners specifications and contract documents must be submitted **with the bid**.

Time is of the essence in the evaluation of proposals, the execution of contract documents and/or issuance of a Purchase Order for the execution of the work. Submittal of proposals that include terms and conditions unacceptable to the Owner, or that lack the information and clarity required by these specifications may be subject to rejection at the sole discretion of the Owner.

A single contract will be awarded for all work included in this specification.

3.2.2 Time and Material Accounting

Contractor shall be required to maintain accurate job logs describing work performed by each crew throughout each day and daily time sheets detailing all work performed and expenses incurred **in the same format as the bid detail submittal**. Daily time sheets shall identify all individuals by name, craft and all hours worked on each portion of the work. Such job logs and time sheets shall accurately account for all man-hours with clear separation and identification of Time, equipment and Material as required accounting for the actual Vacuum and Hydro-blasting service hours and expenses. A sample timesheet shall be included in the bid to be approved by the owner's designated representative.

The timesheets/logs shall clearly detail the specific work that was accomplished during the shift. These sheets shall be presented to the owner's representative on a daily basis for review with the contractor's superintendent. Any presentation of timesheets/logs deferred more than 48 hrs. before being presented to the owner's representative shall be null and void. The Owners representative will sign these documents as a record of receipt and review. Any corrections that need to be made to such signed documents shall be implemented upon the discovery of the error and both parties shall initial the change made on the form. These records will then serve as record of the work performed and a basis for determining the final billing.

The Platte Generating Station is NOT tax exempt and is subject to 7.5% sales tax. See the Nebraska Department of Revenue web site at www.revenue.state.ne.us for contractor's tax information.

3.3 Terms and Conditions

Provide any standard terms and conditions which will be in effect during this completion of this scope of work.

3.4 Deviations

The bid shall provide any explanation of any anticipated deviations from the detailed scope of work or schedules.

3.5 Change Orders

If any extra and/or additional work is to be done or any change in the plans and specifications is deemed necessary, the Purchaser may issue the Contractor a written change order directing that such extra work be done or that such change be made, and the Contract shall be modified accordingly. No claim for extra costs shall be allowed in the absence of a written change order. The Contractor shall give prompt written notice of any matter which they believe to involve extra cost. In the absence of such notice by the Contractor on account thereof his right to such claim shall be deemed to have been waived. Compensation to the Contractor will be calculated as an addition to or deduction from the Contract Price, based upon such written terms as may be established between the parties, either (a) by an acceptable lump sum proposal of the Contractor, or (b) on a cost-plus limited basis not to exceed a specified limit, or (c) on a basis of the unit prices as stated in these specifications where such unit prices apply. In the event that none of the foregoing methods are agreed upon with the Contractor, the Purchaser may perform the work. The Purchaser shall be the sole judge of such action and procedure. Determination of cost-plus work shall be based upon actual cost of labor and material plus a maximum of 20% of actual Contractor cost for overhead, profit,

The Contractor shall submit a formal process for addressing work that may arise but is not described herein. All change orders shall be addressed with a detailed scope of work and approved before proceeding with scope of extra work.

Contractor shall be required to maintain accurate job logs describing work performed by each crew throughout each day and daily time sheets detailing all work performed and expenses incurred **in the same format as the bid detail submittal**. Daily time sheets shall identify all individuals by name, craft and all hours worked on each portion of the work. Such job logs and time sheets shall accurately account for all man-hours with clear separation and identification of Time, equipment and Material as required accounting for the actual service hours and expenses. A sample timesheet shall be included in the bid to be approved by the owner's designated representative.

3.5.1 Time and Material Accounting

Contractor shall be required to maintain accurate job logs describing work performed by each crew throughout each day and daily time sheets detailing all work performed and expenses incurred **in the same format as the bid detail submittal**. Daily time sheets shall identify all individuals by name, craft and all hours worked on each portion of the work. Such job logs and time sheets shall accurately account for all man-hours with clear separation and identification of Time, equipment and Material as required accounting for the actual service hours and expenses. A sample timesheet shall be included in the bid to be approved by the owner's designated representative.

The timesheets/logs shall clearly detail the specific work that was accomplished during the shift. These sheets shall be presented to the Owner's representative on a daily basis for review with the Contractor's Superintendent. Any presentation of timesheets/logs deferred more than 48 hrs. before being presented to the Owner's representative shall be null and void. The Owners representative will sign and date these documents as a record of receipt and review. Any corrections that need to be made to such signed documents

shall be implemented upon the discovery of the error and both parties shall initial the change made on the form. These records will then serve as record of the work performed and a basis for determining the final billing.

3.6 Terms and Conditions

Provide any standard terms and conditions which will be in effect during this completion of this scope of work.

3.7 Exceptions

The purpose of this specification is to give detail on conditions under which the new equipment will operate, scope of Contract, quality of equipment required, standards used in determining its acceptability and similar data. Each bidder shall carefully read all requirements herein set forth and shall offer equipment and services which fully comply with these requirements or shall plainly set forth all points, features, conditions, specifications, etc., wherein the equipment offered does not meet these specifications. Such exceptions as are made shall be listed by section and subsection number and shall be marked in ink in the sections of these specifications. Exceptions shall be explained in detail in a letter accompanying the bid. References shall not be made to the bidder's Proposal for exceptions and supplementary terms. Failure to outline such exceptions will require the successful bidder to comply with these specifications.

4.0 QUALIFICATIONS

The Contractor shall be a firm specializing in the provision of services as outlined within this scope for large-scale utility precipitators and boilers used in the electric power industry. The Contractor shall substantiate its experience through the submittal of three (3) similar projects' **reference list with the bid**. The Contractor will be expected to perform the work without the assistance of Platte Generating Station personnel or tools and comply with plant safety regulations and equipment lockout/tag out procedures.

4.1 Superintendent

The Contractor shall provide well qualified supervisor(s) and a Job Superintendent who will fully direct all field operations for the duration of the project, serve as liaison to the Owner's designated representatives, be fully authorized to make any and all decisions affecting the work in the field and coordinate activities between the Contractor and its subcontractors, if any. A summary of the experience of the Superintendent proposed for this project shall be **provided with the bid**.

5.0 SAFETY

The Contractor is required to follow their OSHA regulations for work in areas that are contaminated with fly ash and for areas that may be considered as confined spaces. NOTE: All contractors must submit **with the bid** a copy of their OSHA compliant Confined Space Procedure and Respiratory Protection Procedure. The Contractor will be required to provide proof that workers have successfully completed respiratory fit testing and pulmonary function testing and have been trained for confined space entry.

The Contractor shall be responsible for compliance with all safety practices as required by the regulatory agencies governing the Contractor's operations as well as any and all safety requirements of the Contractor's organization and shall submit historical evidence of such compliance. All personnel working on site will be required to participate in the plant's safety orientation prior to performing any work on site at PGS.

The plant has an equipment lockout/tag out procedure to prevent the unauthorized starting of motors and the unauthorized movement of valves and dampers. The Contractor is required to use the procedure and add its own locks/tags on top of the plant lock/tags if required. *Removal of plant locks/tags is not allowed and is cause for removal from the plant site.*

6.0 INSURANCE

The contractor shall comply with the attached City's insurance requirements.

7.0 PERFORMANCE AND PAYMENT BOND

The successful Bidder shall file with the OWNER Performance and Payment Bonds in the full amount (100 percent) of the Contract price, as security for the faithful performance of the Contract and the payment of all persons supplying labor and materials for the Work under this Contract, and to cover all guarantees against defective workmanship or materials, or both, for a period of 1 year after the date of final acceptance of the Work by the OWNER. The Surety furnishing these bonds shall have a record of service satisfactory to the OWNER, be authorized to do business in the State where the OWNER's project is located and shall be named on the current list of approved Surety Companies, acceptable on Federal bonds as published by the Audit Staff, Bureau of Accounts, U.S. Treasury Department.

The Attorney-in-Fact (Resident Agent) who executes these bonds on behalf of the Surety must attach a notarized copy of his power-of-attorney as evidence of his authority to bind the Surety on the date of execution of the bond.

8.0 DRAWINGS AND SITE INFORMATION

A selection of drawings has been provided with the bid package for reference only. Additional drawings are available for review at Platte Generating Station office. The Contractor is responsible for making such pre-bid site visits as required to obtain additional details for bidding and execution of the work and for clarification of any questions or concerns the bidder may have related to the work scope and site conditions.

9.0 ATTACHMENTS:

425-4404	Location of Ductwork Expansion Joints
425-4402	Expansion Joint "U" Type Detail
13477	Boiler Schematic Arrangement, Highlighted Areas that need Detonation Blasting
D-183702	Boiler Right Side Elevation
13477-4C-1292	Boiler Tube Material Diagram
13477-4C-1291	Boiler Tube Material Diagram
13477-4C-1290	Boiler Tube Material Diagram
GA-109	AQCS SDA General Arrangement West Elevation View
GA-105	AQCS SDA General Arrangement North Elevation View
S-55289-002	26'9" DIA. Storage Silo Pete Lien Lime SDS Flue Gas Discharge Biproduct Test Results

INSTRUCTIONS TO BIDDERS

1. GENERAL INFORMATION.

The following instructions outline the procedure for preparing and submitting Bids. Bidders must fulfill all requirements as specified in these Documents.

2. TYPE OF BID.

Bidders shall be required to submit prices for all items listed in the Bid Data Form.

3. PREPARATION OF BIDS.

Bidders shall use only the Bid Data Form provided in these Documents. All blank spaces in the Bid Data Form must be filled in, preferably in BLACK ink, in both words and figures where required. No changes to the wording or content of the forms is permitted. Written amounts shall govern in case of discrepancy between the amounts stated in writing and the amounts stated in figures.

Prices stated shall be f.o.b. with freight and full insurance paid by Bidder, to the job site located in Grand Island, Nebraska.

The Bidder shall acknowledge receipt of all Addenda in the Bid Data Form. Bids received without acknowledgement or without the Addendum enclosed will be considered informal.

Individual unit pricing as listed on the Bid Data Form or supplied as supplemental information may be deemed proprietary information and not be released under a public records request. The total amount of the bid is not considered proprietary information and will be released pursuant to City Procurement Code.

4. SUBMISSION OF BIDS.

All Bids must be submitted intact with the correct number of copies no later than the time prescribed, at the place, and in the manner set forth in the ADVERTISEMENT FOR BIDS. Bids must be made on the Bid Data Form provided herein. Each Bid mailed must be submitted intact in a sealed envelope, so marked as to indicate its contents without being opened, and delivered in person or addressed and mailed in conformance with the instructions in the ADVERTISEMENT FOR BIDS.

5. BID SECURITY.

Bids must be accompanied by cash, a certified check, or cashier's check drawn on a bank which is insured by the Federal Deposit Insurance Corporation, or a bid bond issued by a Surety authorized to issue such bonds in the state where the Work is located, in the amount of 5 percent of the bid amount payable to OWNER. This bid security shall be given as a guarantee that the Bidder will not withdraw their Bid for a period of thirty (30) days after bid opening, and that if awarded the Contract, the successful Bidder will execute the attached Contract within the time specified.

The Attorney-in-Fact that executes this bond on behalf of the Surety must attach a notarized copy of his/her power of attorney as evidence of his/her authority to bind the Surety on the date of execution of the bond. Where State Statute requires, certification by a resident agent shall also be provided.

6. RETURN OF BID SECURITY.

Within fifteen (15) days after the award of the Contract, the OWNER will return the bid securities to all Bidders whose Bids are not to be further considered in awarding the Contract. All other retained bid securities will be held until the Contract has been finally executed, after which all bid securities, other than Bidders' bonds and guarantees which have been fortified, will be returned to the respective Bidders whose Bids they accompanied.

7. BASIS OF AWARD.

The award will be made by the OWNER on the basis of the Bid from the lowest responsive, responsible Bidder which, in the OWNER's sole and absolute judgment will best serve the interest of the OWNER. All Bids will be considered on the following basis:

- Delivery time
- Bid price
- Cost of installation
- Suitability to project requirements
- Conformance with the terms of the Bid Documents

- Responsibility and qualification of Bidder

The OWNER reserves the right to reject all Bids, or any Bid not in conformance with the intent of the Bid Documents, and to waive any informalities and irregularities in said Bids.

8. EXECUTION OF CONTRACT.

The successful Bidder shall, within fifteen (15) days after receiving notice of award, sign and deliver to the OWNER the Contract hereto attached together as required in these Bid Documents. Within fifteen (15) days after receiving the signed Contract from the successful Bidder, the OWNER's authorized agent will sign the Contract. Signature by both parties constitutes execution of the Contract.

9. TIME OF COMPLETION.

The time of completion of the Work to be performed under this Contract is the essence of the Contract. The time allowed for the completion of the Work is stated in the Bid Data Form.

10. GRATUITIES AND KICKBACKS.

City Code states that it is unethical for any person to offer, give, or agree to give any City employee or former City employee, or for any City employee or former City employee to solicit, demand, accept, or agree to accept from another person, a gratuity or an offer of employment in connection with any decision, approval, disapproval, recommendation, or preparation of any part of a program requirement or a purchase request, influencing the content of any specification or procurement standard, rendering of advice, investigation, auditing, or in any other advisory capacity in any proceeding or application, request for ruling, determination, claim or controversy, or other particular matter, pertaining to any program requirement or a contract or subcontract, or to any solicitation or proposal therefor. It shall be unethical for any payment, gratuity, or offer of employment to be made by or on behalf of a subcontractor under a contract to the prime contractor or higher tier subcontractor or any person associated therewith, as an inducement for the award of a subcontract or order.

11. FISCAL YEAR.

The City of Grand Island, Nebraska operates on a fiscal year beginning October 1st and ending on the following September 30th. It is understood and agreed that any portion of this agreement which will be performed in a future fiscal year is contingent upon the City Council adopting budget statements and appropriations sufficient to fund such performance.

CONTRACT AGREEMENT

THIS AGREEMENT made and entered into by and between **[SUCCESSFUL BIDDER]**, hereinafter called the Contractor, and the **CITY OF GRAND ISLAND, NEBRASKA**, hereinafter called the City.

WITNESSETH:

THAT, WHEREAS, in accordance with law, the City has caused contract documents to be prepared and an advertisement calling for bids to be published for PRECIPITATOR, BOTTOM ASH AND BOILER INDUSTRIAL CLEANING-FALL 2024 OUTAGE; and

WHEREAS, the City, in the manner prescribed by law, has publicly opened, examined, and canvassed the bids submitted, and has determined the aforesaid Contractor to be the lowest responsive and responsible bidder, and has duly awarded to said Contractor a contract therefore, for the sum or sums named in the Contractor's bid, a copy thereof being attached to and made a part of this Contract;

NOW, THEREFORE, in consideration of the compensation to be paid to the Contractor and of the mutual agreements herein contained, the parties have agreed and hereby agree, the City for itself and its successors, and the Contractor for itself, himself/herself, or themselves, and its, his/her, or their successors, as follows:

ARTICLE I. That the following documents shall comprise the Contract, and shall together be referred to as the "Agreement" or the "Contract Documents";

1. This Contract Agreement.
2. City of Grand Island's Specification for this project.
3. **[NAME OF SUCCESSFUL BIDDER]** bid signed and dated **[DATE OF BID]**.

In the event of any conflict between the terms of the Contract Documents, the provisions of the document first listed shall prevail.

ARTICLE II. That the Contractor shall (a) furnish all tools, equipment, superintendence, transportation, and other construction materials, services and facilities; (b) furnish, as agent for the City, all materials, supplies and equipment specified and required to be incorporated in and form a permanent part of the completed work; (c) provide and perform all necessary labor; and (d) in a good substantial and workmanlike manner and in accordance with the requirements, stipulations, provisions, and conditions of the Contract documents as listed in the attached General Specifications, said documents forming the Contract and being as fully a part thereof as if repeated verbatim herein, perform, execute, construct and complete all work included in and covered by the City's official award of this Contract to the said Contractor, such award being based on the acceptance by the City of the Contractor's bid;

ARTICLE III. That the City shall pay to the Contractor for the performance of the work embraced in this Contract and the Contractor will accept as full compensation therefore the sum (subject to adjustment as provided by the Contract) of **[DOLLAR AMOUNT] (\$00.00)** for all services, materials, and work covered by and included in the Contract award and designated in the foregoing Article II; payments thereof to be made in cash or its equivalent in the manner provided in the General Specifications.

The total cost of the Contract includes:

Base Bid:	\$.00
Sales Tax on Materials/Equipment:	\$.00
Sales Tax on Labor:	<u>\$.00</u>
Total	\$.00

The City of Grand Island, Nebraska operates on a fiscal year beginning October 1st and ending on the following September 30th. It is understood and agreed that any portion of this agreement which will be performed in a future fiscal year is contingent upon the City Council adopting budget statements and appropriations sufficient to fund such performance.

ARTICLE IV. The Contractor hereby agrees to act as agent for the City in purchasing materials and supplies for the City for this project. The City shall be obligated to the vendor of the materials and supplies for the purchase price, but the Contractor shall handle all payments hereunder on behalf of the City. The vendor shall make demand or claim for payment of the purchase price from the City by submitting an invoice to the Contractor. Title to all materials and supplies purchased hereunder shall vest in the City directly from the vendor. Regardless of the method of payment, title shall vest immediately in the City. The Contractor shall not acquire title to any materials and supplies incorporated into the project. All invoices shall bear the Contractor's name as agent for the City. This paragraph will apply only to these materials and supplies actually incorporated into and becoming a part of the finished product of the PRECIPITATOR, BOTTOM ASH AND BOILER INDUSTRIAL CLEANING-FALL 2024 OUTAGE.

ARTICLE V. That the Contractor shall start work as soon as possible after the Contract is signed and the required bonds and insurance are approved, and that the Contractor shall deliver the equipment, tools, supplies, and materials F.O.B. Platte Generating Station, and complete the work on or before the end of the scheduled spring outage, currently scheduled for September 26, 2024 to October 12, 2024.

ARTICLE VI. The Contractor agrees to comply with all applicable State fair labor standards in the execution of this Contract as required by Section 73-102, R.R.S. 1943. The Contractor further agrees to comply with the provisions of Section 48-657, R.R.S. 1943, pertaining to contributions to the Unemployment Compensation Fund of the State of Nebraska. During the performance of this Contract, the Contractor and all subcontractors agree not to discriminate in hiring or any other employment practice on the basis, of race, color, religion, sex, national origin, age or disability. The Contractor agrees to comply with all applicable Local, State and Federal rules and regulations. The Contractor agrees to maintain a drug-free workplace policy and will provide a copy of the policy to the City upon request. Every public contractor and his, her or its subcontractors who are awarded a contract by the City for the physical performance of services within the State of Nebraska shall register with and use a federal immigration verification system to determine the work eligibility status of new employees physically performing services within the State of Nebraska.

ARTICLE VII. Gratuities and kickbacks: City Code states that it is unethical for any person to offer, give, or agree to give any City employee or former City employee, or for any City employee or former City employee to solicit, demand, accept, or agree to accept from another person, a gratuity or an offer of employment in connection with any decision, approval, disapproval, recommendation, or preparation of any part of a program requirement or a purchase request, influencing the content of any specification or procurement standard, rendering of advice, investigation, auditing, or in any other advisory capacity in any proceeding or application, request for ruling, determination, claim or controversy, or other particular matter, pertaining to any program requirement or a contract or subcontract, or to any solicitation or proposal therefor. It

shall be unethical for any payment, gratuity, or offer of employment to be made by or on behalf of a subcontractor under a contract to the prime contractor or higher tier subcontractor or any person associated therewith, as an inducement for the award of a subcontract or order.

[SUCCESSFUL BIDDER]

By _____ Date _____

Title _____

CITY OF GRAND ISLAND, NEBRASKA

By _____ Date _____
Mayor

Attest: _____
City Clerk

The Contract is in due form according to law and hereby approved.

Attorney for the City

Date

DRAFT

MINIMUM INSURANCE REQUIREMENTS
CITY OF GRAND ISLAND, NEBRASKA

The successful bidder shall obtain insurance from companies authorized to do business in Nebraska of such types and in such amounts as may be necessary to protect the Bidder and the interests of the City against hazards or risks of loss as hereinafter specified. This insurance shall cover all aspects of the Bidder's operations and completed operations. Failure to maintain adequate coverage shall not relieve Bidder of any contractual responsibility or obligation. Minimum insurance coverage shall be the amounts stated herein or the amounts required by applicable law, whichever are greater.

1. WORKERS COMPENSATION AND EMPLOYER'S LIABILITY

This insurance shall protect the Bidder against all claims under applicable State workers compensation laws. This insurance shall provide coverage in every state in which work for this project might be conducted. The liability limits shall not be less than the following:

Workers Compensation	Statutory Limits
Employers Liability	\$100,000 each accident
	\$100,000 each employee
	\$500,000 policy limit

2. BUSINESS AUTOMOBILE LIABILITY

This insurance shall be written in comprehensive form and shall protect the Bidder, Bidder's employees, or subcontractors from claims due to the ownership, maintenance, or use of a motor vehicle. The liability limits shall not be less than the following:

Bodily Injury & Property Damage	\$ 500,000 Combined Single Limit
---------------------------------	----------------------------------

3. COMPREHENSIVE GENERAL LIABILITY

The comprehensive general liability coverage shall contain no exclusion relative to explosion, collapse, or underground property. The liability limits shall not be less than the following:

Bodily Injury & Property Damage	\$ 500,000 each occurrence
	\$1,000,000 aggregate

4. UMBRELLA LIABILITY INSURANCE

This insurance shall protect the Bidder against claims in excess of the limits provided under employer's liability, comprehensive automobile liability, and commercial general liability policies. The umbrella policy shall follow the form of the primary insurance, including the application of the primary limits. The liability limits shall not be less than the following:

Bodily Injury & Property Damage	\$1,000,000 each occurrence
	\$1,000,000 general aggregate

5. ADDITIONAL REQUIREMENTS

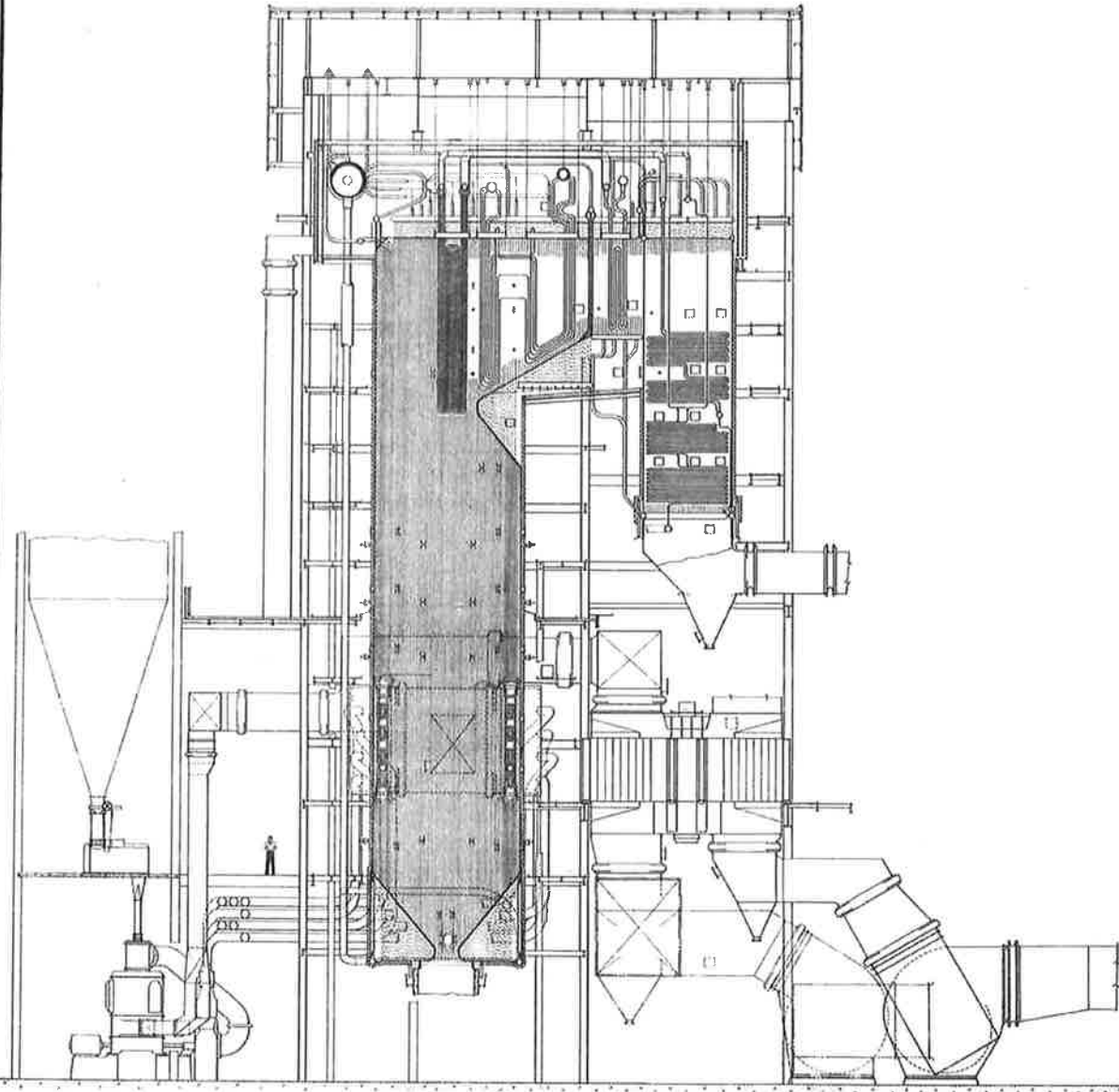
The City may require insurance covering a Bidder or subcontractor more or less than the standard requirements set forth herein depending upon the character and extent of the work to be performed by such Bidder or subcontractor.

Insurance as herein required shall be maintained in force until the City releases the Bidder of all obligations under the Contract.

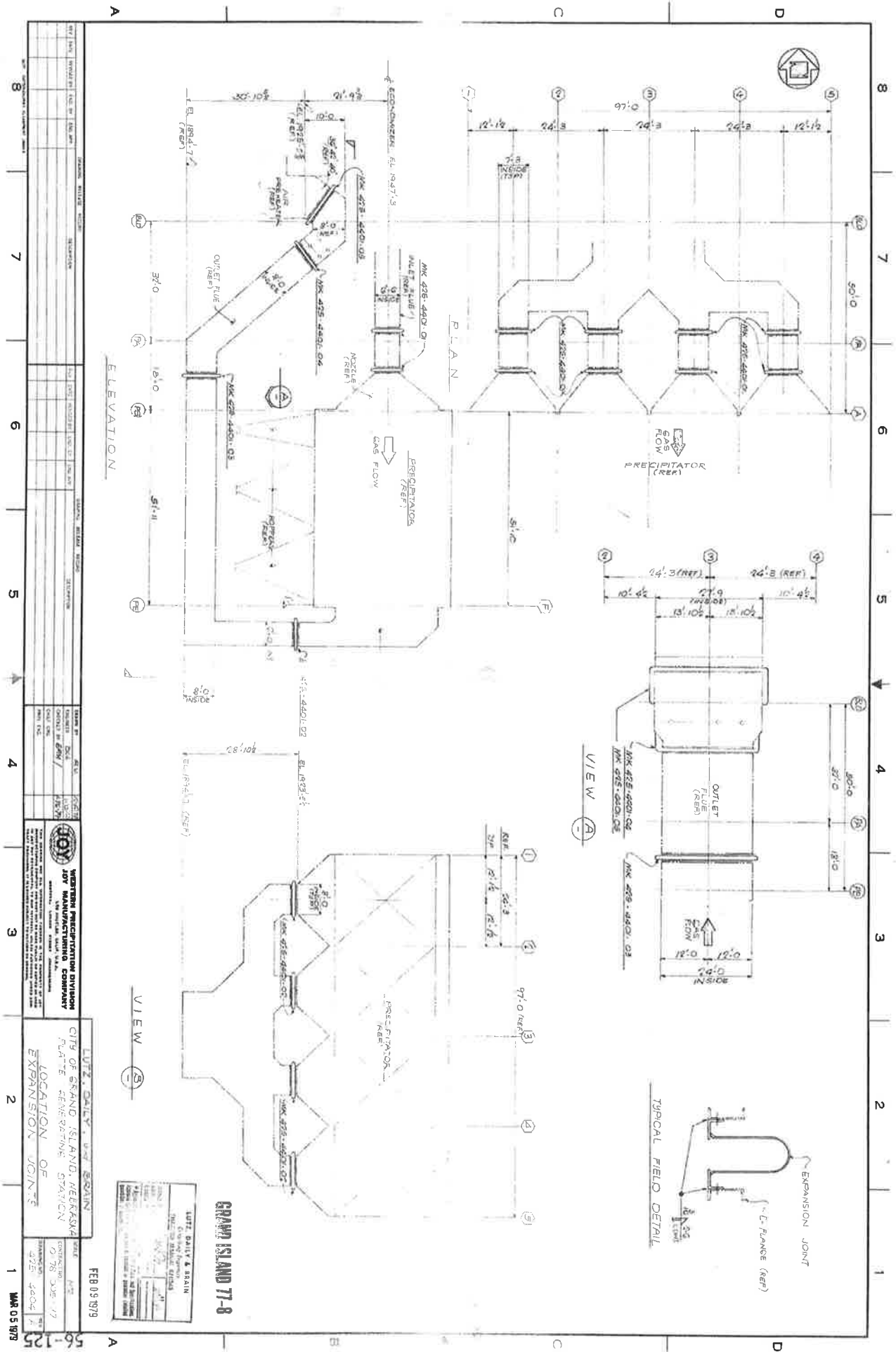
The Bidder shall provide and carry any additional insurance as may be required by special provisions of these specifications.

6. CERTIFICATE OF INSURANCE

Satisfactory certificates of insurance shall be filed with the City prior to starting any work on this Contract. **The certificates shall show the City as an additional insured on all coverage except Workers Compensation. The certificate shall state that thirty (30) days written notice shall be given to the City before any policy is cancelled (strike the "endeavor to" wording often shown on certificate forms). If the Bidder cannot have the "endeavor to" language stricken, the Bidder may elect to provide a new certificate of insurance every thirty (30) days during the contract. Bidder shall immediately notify the City if there is any reduction of coverage because of revised limits or claims paid which affect the aggregate of any policy.**

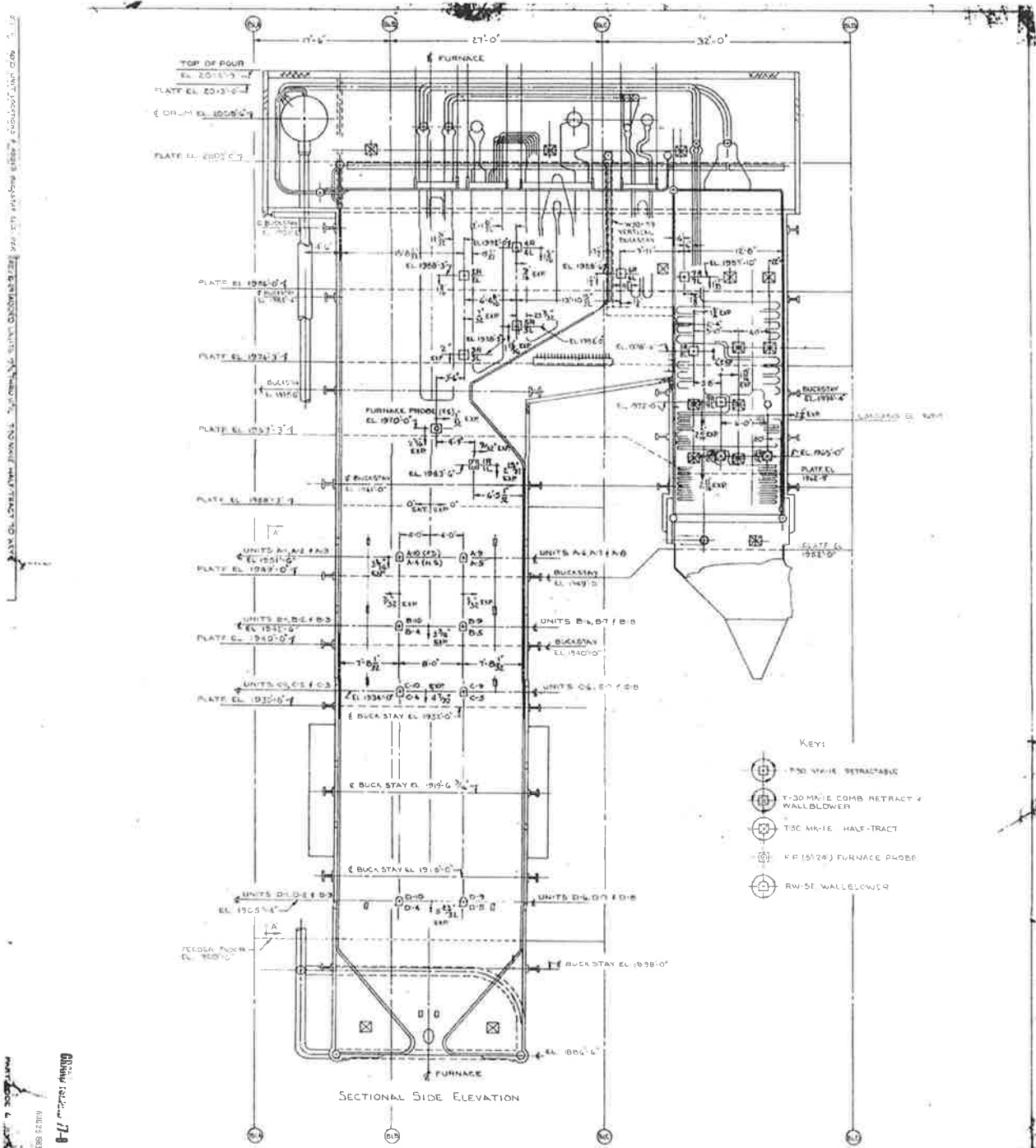


Dwg. No. 40-195

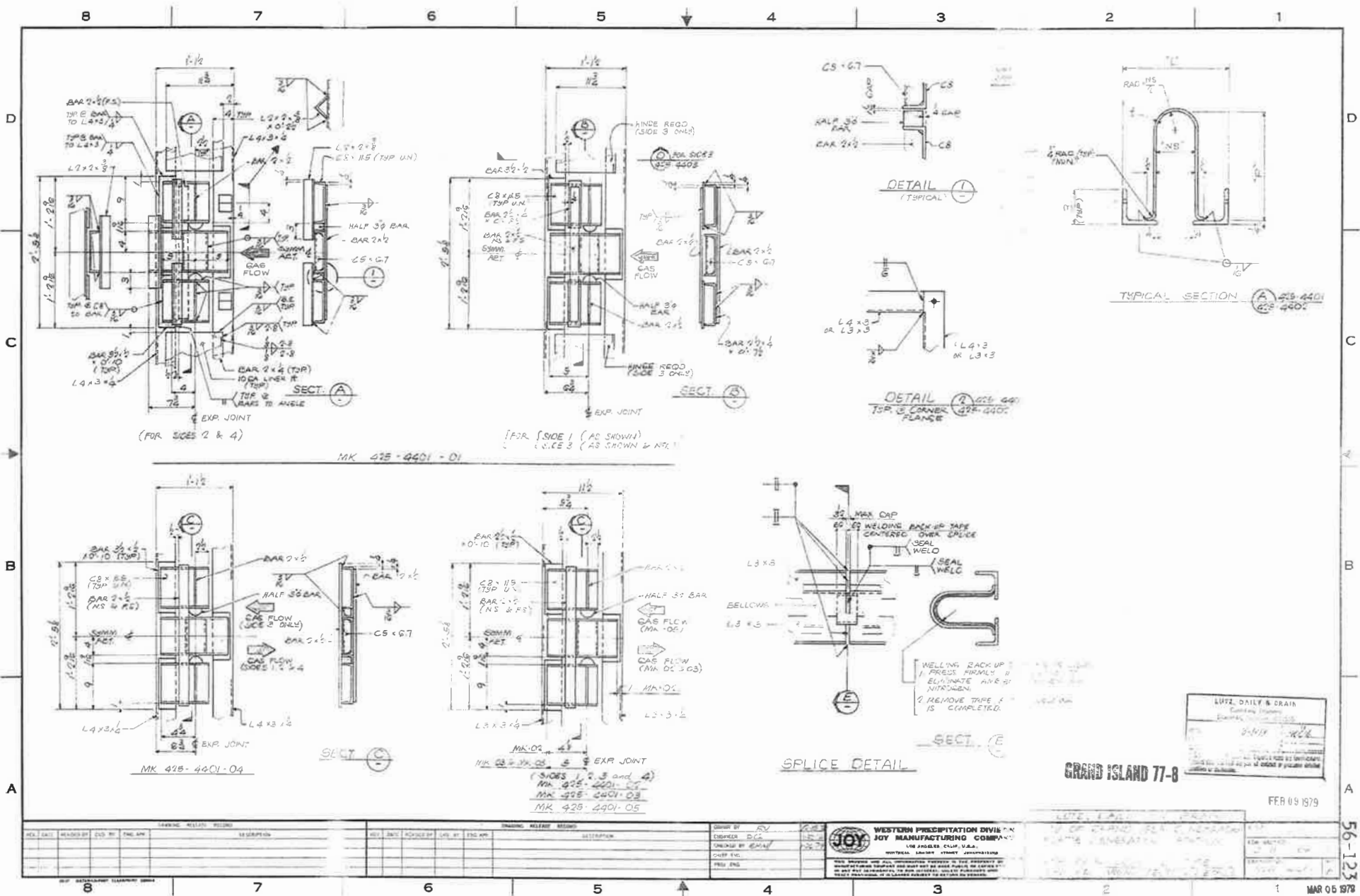


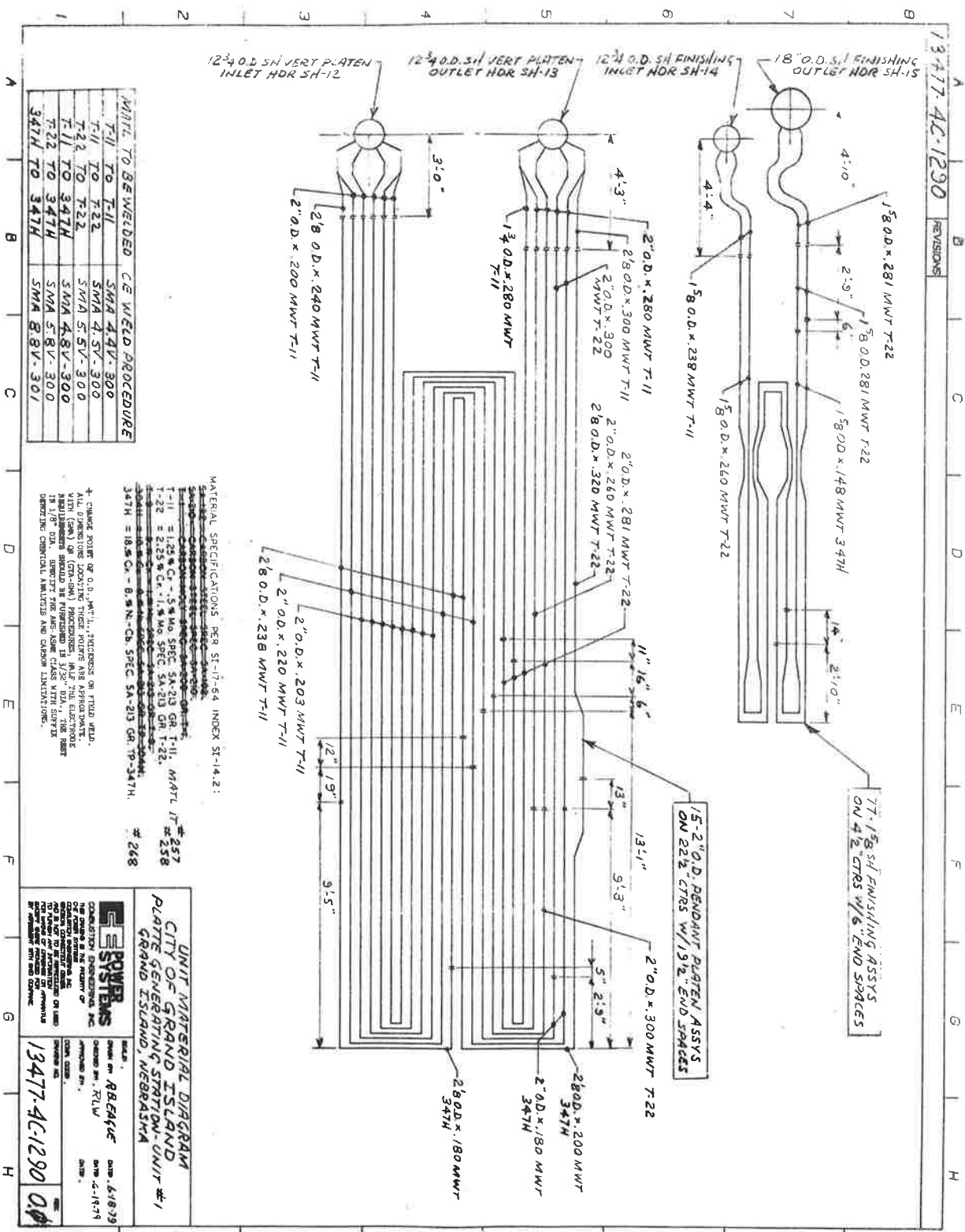
NO.	DATE	BY	CHKD.	DESCRIPTION
1	02/05/79	W. J.
2	02/05/79
3	02/05/79
4	02/05/79
5	02/05/79
6	02/05/79
7	02/05/79
8	02/05/79

WESTERN PRECIPITATION DIVISION
 JOY MANUFACTURING COMPANY
 CITY OF GRAND ISLAND, NEBRASKA
 PLANT ENGINEERING SECTION
 LOCATION OF EXPANSION JOINT
 FEB 05 1979
 MAR 05 1979



GENERAL NOTES	
1. SEE DRAWING FOR DIMENSIONS AND ELEVATIONS.	
2. ALL DIMENSIONS ARE TO CENTER UNLESS OTHERWISE NOTED.	
3. ALL MATERIALS ARE TO BE AS SHOWN UNLESS OTHERWISE NOTED.	
4. ALL WORK IS TO BE DONE IN ACCORDANCE WITH THE LATEST EDITIONS OF THE AISC, ASME, AND AWS SPECIFICATIONS.	
5. ALL WELDS ARE TO BE MADE IN ACCORDANCE WITH THE LATEST EDITIONS OF THE AISC, ASME, AND AWS SPECIFICATIONS.	
6. ALL BOLTS AND NUTS ARE TO BE OF THE GRADE AND TYPE SPECIFIED.	
7. ALL BOLTS AND NUTS ARE TO BE TIGHTENED TO THE SPECIFIED TORQUE.	
8. ALL BOLTS AND NUTS ARE TO BE PROTECTED AGAINST CORROSION.	
9. ALL BOLTS AND NUTS ARE TO BE PROTECTED AGAINST GALVANIC CORROSION.	
10. ALL BOLTS AND NUTS ARE TO BE PROTECTED AGAINST WEAR.	
11. ALL BOLTS AND NUTS ARE TO BE PROTECTED AGAINST FATIGUE.	
12. ALL BOLTS AND NUTS ARE TO BE PROTECTED AGAINST STRESS CORROSION.	
13. ALL BOLTS AND NUTS ARE TO BE PROTECTED AGAINST HYDROGEN BRITTLENESS.	
14. ALL BOLTS AND NUTS ARE TO BE PROTECTED AGAINST TEMPERATURE CRACKING.	
15. ALL BOLTS AND NUTS ARE TO BE PROTECTED AGAINST CREEP.	
16. ALL BOLTS AND NUTS ARE TO BE PROTECTED AGAINST FLOW LOCALIZATION.	
17. ALL BOLTS AND NUTS ARE TO BE PROTECTED AGAINST SCREW STRIPING.	
18. ALL BOLTS AND NUTS ARE TO BE PROTECTED AGAINST SELF-LIGHTING.	
19. ALL BOLTS AND NUTS ARE TO BE PROTECTED AGAINST SPALLING.	
20. ALL BOLTS AND NUTS ARE TO BE PROTECTED AGAINST EROSION.	
21. ALL BOLTS AND NUTS ARE TO BE PROTECTED AGAINST IMPACT.	
22. ALL BOLTS AND NUTS ARE TO BE PROTECTED AGAINST VIBRATION.	
23. ALL BOLTS AND NUTS ARE TO BE PROTECTED AGAINST RESONANCE.	
24. ALL BOLTS AND NUTS ARE TO BE PROTECTED AGAINST FATIGUE FAILURE.	
25. ALL BOLTS AND NUTS ARE TO BE PROTECTED AGAINST STRESS CORROSION FAILURE.	
26. ALL BOLTS AND NUTS ARE TO BE PROTECTED AGAINST HYDROGEN BRITTLENESS FAILURE.	
27. ALL BOLTS AND NUTS ARE TO BE PROTECTED AGAINST TEMPERATURE CRACKING FAILURE.	
28. ALL BOLTS AND NUTS ARE TO BE PROTECTED AGAINST CREEP FAILURE.	
29. ALL BOLTS AND NUTS ARE TO BE PROTECTED AGAINST FLOW LOCALIZATION FAILURE.	
30. ALL BOLTS AND NUTS ARE TO BE PROTECTED AGAINST SCREW STRIPING FAILURE.	
31. ALL BOLTS AND NUTS ARE TO BE PROTECTED AGAINST SELF-LIGHTING FAILURE.	
32. ALL BOLTS AND NUTS ARE TO BE PROTECTED AGAINST SPALLING FAILURE.	
33. ALL BOLTS AND NUTS ARE TO BE PROTECTED AGAINST EROSION FAILURE.	
34. ALL BOLTS AND NUTS ARE TO BE PROTECTED AGAINST IMPACT FAILURE.	
35. ALL BOLTS AND NUTS ARE TO BE PROTECTED AGAINST VIBRATION FAILURE.	
36. ALL BOLTS AND NUTS ARE TO BE PROTECTED AGAINST RESONANCE FAILURE.	
37. ALL BOLTS AND NUTS ARE TO BE PROTECTED AGAINST FATIGUE FAILURE.	
38. ALL BOLTS AND NUTS ARE TO BE PROTECTED AGAINST STRESS CORROSION FAILURE.	
39. ALL BOLTS AND NUTS ARE TO BE PROTECTED AGAINST HYDROGEN BRITTLENESS FAILURE.	
40. ALL BOLTS AND NUTS ARE TO BE PROTECTED AGAINST TEMPERATURE CRACKING FAILURE.	
41. ALL BOLTS AND NUTS ARE TO BE PROTECTED AGAINST CREEP FAILURE.	
42. ALL BOLTS AND NUTS ARE TO BE PROTECTED AGAINST FLOW LOCALIZATION FAILURE.	
43. ALL BOLTS AND NUTS ARE TO BE PROTECTED AGAINST SCREW STRIPING FAILURE.	
44. ALL BOLTS AND NUTS ARE TO BE PROTECTED AGAINST SELF-LIGHTING FAILURE.	
45. ALL BOLTS AND NUTS ARE TO BE PROTECTED AGAINST SPALLING FAILURE.	
46. ALL BOLTS AND NUTS ARE TO BE PROTECTED AGAINST EROSION FAILURE.	
47. ALL BOLTS AND NUTS ARE TO BE PROTECTED AGAINST IMPACT FAILURE.	
48. ALL BOLTS AND NUTS ARE TO BE PROTECTED AGAINST VIBRATION FAILURE.	
49. ALL BOLTS AND NUTS ARE TO BE PROTECTED AGAINST RESONANCE FAILURE.	
50. ALL BOLTS AND NUTS ARE TO BE PROTECTED AGAINST FATIGUE FAILURE.	
51. ALL BOLTS AND NUTS ARE TO BE PROTECTED AGAINST STRESS CORROSION FAILURE.	
52. ALL BOLTS AND NUTS ARE TO BE PROTECTED AGAINST HYDROGEN BRITTLENESS FAILURE.	
53. ALL BOLTS AND NUTS ARE TO BE PROTECTED AGAINST TEMPERATURE CRACKING FAILURE.	
54. ALL BOLTS AND NUTS ARE TO BE PROTECTED AGAINST CREEP FAILURE.	
55. ALL BOLTS AND NUTS ARE TO BE PROTECTED AGAINST FLOW LOCALIZATION FAILURE.	
56. ALL BOLTS AND NUTS ARE TO BE PROTECTED AGAINST SCREW STRIPING FAILURE.	
57. ALL BOLTS AND NUTS ARE TO BE PROTECTED AGAINST SELF-LIGHTING FAILURE.	
58. ALL BOLTS AND NUTS ARE TO BE PROTECTED AGAINST SPALLING FAILURE.	
59. ALL BOLTS AND NUTS ARE TO BE PROTECTED AGAINST EROSION FAILURE.	
60. ALL BOLTS AND NUTS ARE TO BE PROTECTED AGAINST IMPACT FAILURE.	
61. ALL BOLTS AND NUTS ARE TO BE PROTECTED AGAINST VIBRATION FAILURE.	
62. ALL BOLTS AND NUTS ARE TO BE PROTECTED AGAINST RESONANCE FAILURE.	
63. ALL BOLTS AND NUTS ARE TO BE PROTECTED AGAINST FATIGUE FAILURE.	
64. ALL BOLTS AND NUTS ARE TO BE PROTECTED AGAINST STRESS CORROSION FAILURE.	
65. ALL BOLTS AND NUTS ARE TO BE PROTECTED AGAINST HYDROGEN BRITTLENESS FAILURE.	
66. ALL BOLTS AND NUTS ARE TO BE PROTECTED AGAINST TEMPERATURE CRACKING FAILURE.	
67. ALL BOLTS AND NUTS ARE TO BE PROTECTED AGAINST CREEP FAILURE.	
68. ALL BOLTS AND NUTS ARE TO BE PROTECTED AGAINST FLOW LOCALIZATION FAILURE.	
69. ALL BOLTS AND NUTS ARE TO BE PROTECTED AGAINST SCREW STRIPING FAILURE.	
70. ALL BOLTS AND NUTS ARE TO BE PROTECTED AGAINST SELF-LIGHTING FAILURE.	
71. ALL BOLTS AND NUTS ARE TO BE PROTECTED AGAINST SPALLING FAILURE.	
72. ALL BOLTS AND NUTS ARE TO BE PROTECTED AGAINST EROSION FAILURE.	
73. ALL BOLTS AND NUTS ARE TO BE PROTECTED AGAINST IMPACT FAILURE.	
74. ALL BOLTS AND NUTS ARE TO BE PROTECTED AGAINST VIBRATION FAILURE.	
75. ALL BOLTS AND NUTS ARE TO BE PROTECTED AGAINST RESONANCE FAILURE.	
76. ALL BOLTS AND NUTS ARE TO BE PROTECTED AGAINST FATIGUE FAILURE.	
77. ALL BOLTS AND NUTS ARE TO BE PROTECTED AGAINST STRESS CORROSION FAILURE.	
78. ALL BOLTS AND NUTS ARE TO BE PROTECTED AGAINST HYDROGEN BRITTLENESS FAILURE.	
79. ALL BOLTS AND NUTS ARE TO BE PROTECTED AGAINST TEMPERATURE CRACKING FAILURE.	
80. ALL BOLTS AND NUTS ARE TO BE PROTECTED AGAINST CREEP FAILURE.	
81. ALL BOLTS AND NUTS ARE TO BE PROTECTED AGAINST FLOW LOCALIZATION FAILURE.	
82. ALL BOLTS AND NUTS ARE TO BE PROTECTED AGAINST SCREW STRIPING FAILURE.	
83. ALL BOLTS AND NUTS ARE TO BE PROTECTED AGAINST SELF-LIGHTING FAILURE.	
84. ALL BOLTS AND NUTS ARE TO BE PROTECTED AGAINST SPALLING FAILURE.	
85. ALL BOLTS AND NUTS ARE TO BE PROTECTED AGAINST EROSION FAILURE.	
86. ALL BOLTS AND NUTS ARE TO BE PROTECTED AGAINST IMPACT FAILURE.	
87. ALL BOLTS AND NUTS ARE TO BE PROTECTED AGAINST VIBRATION FAILURE.	
88. ALL BOLTS AND NUTS ARE TO BE PROTECTED AGAINST RESONANCE FAILURE.	
89. ALL BOLTS AND NUTS ARE TO BE PROTECTED AGAINST FATIGUE FAILURE.	
90. ALL BOLTS AND NUTS ARE TO BE PROTECTED AGAINST STRESS CORROSION FAILURE.	
91. ALL BOLTS AND NUTS ARE TO BE PROTECTED AGAINST HYDROGEN BRITTLENESS FAILURE.	
92. ALL BOLTS AND NUTS ARE TO BE PROTECTED AGAINST TEMPERATURE CRACKING FAILURE.	
93. ALL BOLTS AND NUTS ARE TO BE PROTECTED AGAINST CREEP FAILURE.	
94. ALL BOLTS AND NUTS ARE TO BE PROTECTED AGAINST FLOW LOCALIZATION FAILURE.	
95. ALL BOLTS AND NUTS ARE TO BE PROTECTED AGAINST SCREW STRIPING FAILURE.	
96. ALL BOLTS AND NUTS ARE TO BE PROTECTED AGAINST SELF-LIGHTING FAILURE.	
97. ALL BOLTS AND NUTS ARE TO BE PROTECTED AGAINST SPALLING FAILURE.	
98. ALL BOLTS AND NUTS ARE TO BE PROTECTED AGAINST EROSION FAILURE.	
99. ALL BOLTS AND NUTS ARE TO BE PROTECTED AGAINST IMPACT FAILURE.	
100. ALL BOLTS AND NUTS ARE TO BE PROTECTED AGAINST VIBRATION FAILURE.	





MATL. TO BE WELDED CW WELD PROCEDURE

T-11 TO T-11	SMA 44V-300
T-11 TO T-22	SMA 41SV-300
T-22 TO T-22	SMA 51SV-300
T-11 TO 347H	SMA 48V-300
T-22 TO 347H	SMA 51SV-300
347H TO 347H	SMA 88V-301

± CHANGE POINT OF O.D., W.T., THICKNESS OR FIELD WELD.
 ALL DIMENSIONS LOCATING THESE POINTS ARE APPROXIMATE.
 WITH (SMA) OR (GMA) WELD FURNISHING 3/32" DIA. ELECTRODE
 IN 1/8" DIA. BRACKET FOR AWS CLASS CLASS WITH SURTEX
 DETERMINE CHEMICAL ANALYSIS AND CARBON LIMITATIONS.

MATERIAL SPECIFICATIONS PER SI-17-64 INDEX SI-14.2:
 28 O.D. x 280 MWT T-11
 28 O.D. x 300 MWT T-11
 28 O.D. x 320 MWT T-22
 28 O.D. x 260 MWT T-22
 28 O.D. x 203 MWT T-11
 28 O.D. x 220 MWT T-11
 28 O.D. x 238 MWT T-11
 28 O.D. x 180 MWT
 347H = 18.5 CM - 8.5 IN. - CB. SPEC. SA-213 GR. TP-347H. # 268

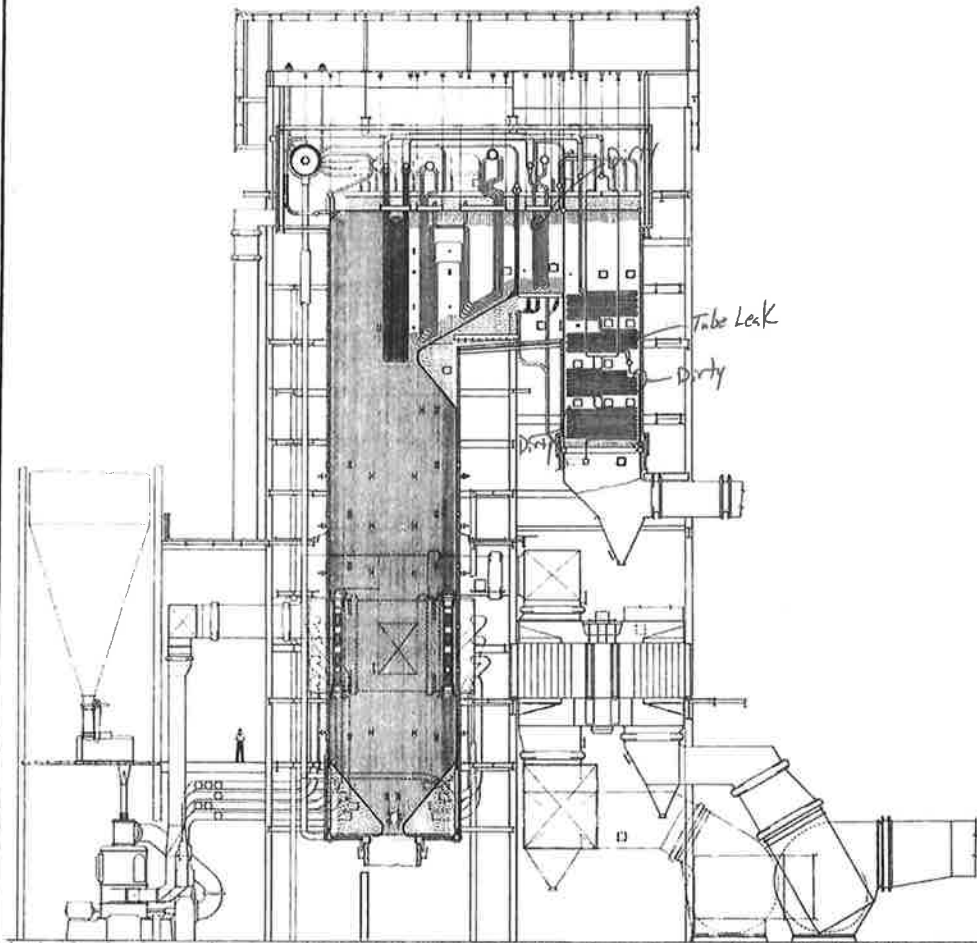
UNIT MATERIAL DIAGRAM
CITY OF GRAND ISLAND
PLATE GENERATING STATION- UNIT #1
GRAND ISLAND, NEBRASKA

POWER SYSTEMS
 CONSULTING ENGINEERS, INC.
 1000 S. 10TH ST., SUITE 200
 LINCOLN, NEBRASKA 68502
 PHONE: (402) 426-1111
 FAX: (402) 426-1112

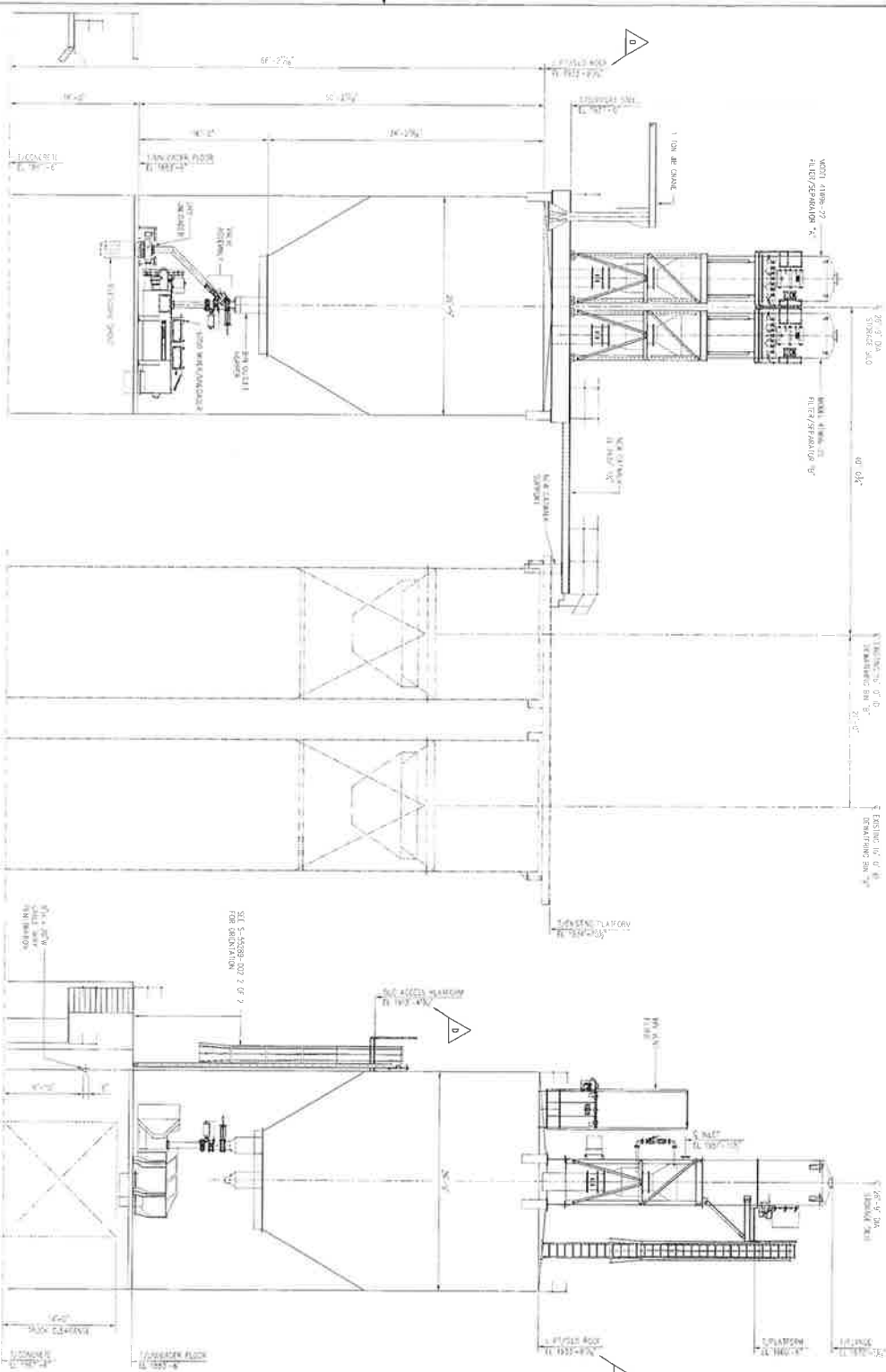
DESIGNED BY: **ABERGIE**
 CHECKED BY: **R.L.W.**
 DATE: **5/18/79**

ORDER NO.: **13477-4C-1290**
 DATE: **01/01**

Fall 22

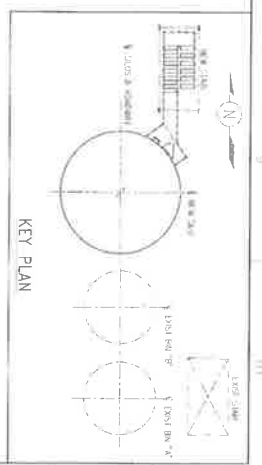


Dwg. No. 40-195



WEST ELEVATION
LOOKING EAST

NORTH ELEVATION
LOOKING SOUTH



THE GENERAL NOTES AND PARTICULARS, SPECIFICATIONS AND SCHEDULES GOVERN OVER ANY DISCREPANCIES BETWEEN THESE DRAWINGS AND ANY PREVIOUS DRAWINGS. THE CONTRACTOR SHALL BE RESPONSIBLE FOR OBTAINING ALL NECESSARY PERMITS AND APPROVALS FROM THE APPROPRIATE AGENCIES. THE CONTRACTOR SHALL BE RESPONSIBLE FOR OBTAINING ALL NECESSARY PERMITS AND APPROVALS FROM THE APPROPRIATE AGENCIES. THE CONTRACTOR SHALL BE RESPONSIBLE FOR OBTAINING ALL NECESSARY PERMITS AND APPROVALS FROM THE APPROPRIATE AGENCIES.

UNITED EXHIBIT ROOM CORPORATION
3500 W. 10TH STREET, SUITE 100
DENVER, CO 80202

DATE: 08/15/2011
BY: [Signature]

Conforms to HazCom 2012/United States

SAFETY DATA SHEET

Quicklime

Section 1. Identification

GHS product identifier : Quicklime

Other means of identification : Snowbright Quicklime, Quicklime, High calcium quicklime, Pebble lime, Hi Cal, Unslaked lime, Calcium Oxide, CaO, Type S, Type N, Calcined limestone, Burnt lime, Chemical lime

Identified uses : Water treatment, Caustic agent, pH adjustment, Neutralization, Acid gas absorption, Construction

Supplier's details : Pete Lien & Sons, Inc.
PO Box 440
Rapid City, SD 57702

Emergency telephone number (hours of operation) : (605) 342-7224 (Monday-Friday 8am-5pm)

Section 2. Hazards identification

Classification of the substance or mixture : SKIN IRRITATION - Category 2
EYE DAMAGE - Category 1
SPECIFIC TARGET ORGAN TOXICITY SINGLE EXPOSURE [Respiratory System] - Category 3
SPECIFIC TARGET ORGAN TOXICITY REPEAT EXPOSURE [Respiratory System] - Category 1
CARCINOGEN - Category 1A

GHS label elements



Hazard pictograms :

Signal word : Danger

Hazard statements : Causes skin irritation. Causes serious eye damage. May cause cancer through inhalation. May cause respiratory irritation. Reacts violently with water, releasing heat, which can ignite combustible material. Causes damage to lungs through prolonged and repeated exposure.

Precautionary statements

Prevention : Wear protective gloves/protective clothing/face protection /eye protection. Wash exposed skin thoroughly after handling. Use only outdoors or in a well-ventilated area. Obtain special instructions before use. Do not handle until all safety precautions have been read and understood. Do not breathe dust. Do not eat, drink or smoke when using this product.

Response	: IF ON SKIN: Wash exposed skin with plenty of water. If skin irritation occurs: Get medical attention. Take off contaminated clothing and wash it before reuse. IF IN EYES: Rinse cautiously with water for several minutes. Remove contact lenses, if present and easy to do. Continue rinsing. Seek medical attention immediately. IF INHALED: Remove person to fresh air and keep comfortable for breathing. Seek medical attention if you feel unwell IF SWALLOWED: Rinse mouth. Do NOT induce vomiting. If exposed or concerned: Get medical advice
Storage	: Store to minimize dust generation. Store in a well-ventilated place. Keep container tightly closed.
Disposal	: Dispose of contents or containers in accordance with applicable regulations. Do not use water on material spills.
Hazards not otherwise classified	: Calcium oxide reacts violently with water, releasing heat which can ignite combustible materials.
Ingredients with unknown toxicity	: Not Applicable

Section 3. Composition/information on ingredients

Substance/mixture : Calcium Oxide (CaO)

CAS number/other identifiers

Component	CAS #	% by weight
Calcium Oxide	1305-78-8	>87
Magnesium Oxide	1309-48-4	<5
Crystalline Silica (Quartz)	14808-60-7	<2.0

Section 4. First aid measures

Description of necessary first aid measures

Eye Contact	: Contact can cause severe irritation or burning of eyes, including permanent damage. Immediately flush eyes with generous amounts of water for at least 15 minutes. Pull back the eyelid to ensure that all lime dust has been washed out. Seek medical attention immediately. Do not rub eyes.
Skin Contact	: Contact can cause severe irritation or burning of skin, especially in the presence of moisture. Wash exposed area with large amounts of water. Seek medical attention immediately.
Ingestion	: This product can cause severe irritation or burning of gastrointestinal tract if swallowed. Do not induce vomiting. Seek medical attention immediately. Never give anything by mouth unless instructed to do so by medical personnel.
Inhalation	: This product can cause severe irritation of the respiratory system. Move victim to fresh air. Seek medical attention if necessary. If breathing has stopped, give artificial respiration.

Most important symptoms/effects, acute and delayed : Irritation of skin, eyes, gastrointestinal tract or respiratory tract. Long-term exposure by inhalation may cause permanent damage. This product contains crystalline silica, which has been classified by IARC as (Group I) carcinogenic to humans when inhaled. Inhalation of silica can also cause a chronic lung disorder, silicosis.

Indication of immediate medical attention and special treatment needed, if necessary: See first aid information above. Note to Physicians: Provide general supportive measures and treat symptomatically.

Section 5. Fire-fighting measures

Extinguishing Media : Use dry chemical fire extinguisher. Do not use water or halogenated compounds, except that large amounts of water may be used to deluge small quantities of quicklime.

Fire Hazards : Quicklime is not combustible or flammable. However, quicklime reacts violently with water, and can release heat sufficient to ignite combustible materials. Quicklime is not considered to be an explosion hazard, although reaction with water or other incompatible materials may rupture containers. Hazardous Combustion Products: None.

Special Protective Equipment and Fire Fighting Instructions:

Keep personnel away from and upwind of fire. Wear full fire-fighting turn-out gear (full Bunker gear), and respiratory protection (SCBA)

Section 6. Accidental release measures

Personal precautions, protective equipment and emergency procedures

Spill/Leak Procedures : Do NOT use water on bulk material spills. Lime reacts violently with water, releasing heat. Use proper protective equipment.

Small Spills : Use dry methods to collect spilled materials. Avoid generating dust. Do not clean up with compressed air. Store collected materials in dry, sealed plastic or metal containers. Residue on surfaces may be water washed.

Large Spills : Use dry methods to collect spilled materials. Evacuate area downwind of clean-up operations to minimize dust exposure. Store spilled materials in dry sealed plastic or metal containers.

Methods and materials for containment and cleaning up

Containment : For large spills, as much as possible, avoid the generation of dusts. Prevent release to sewers or waterways.

Cleanup : Residual amounts of material can be flushed with large amounts of water. Equipment can be washed with either mild vinegar and water solution, or detergent and water.

Section 7. Handling and storage

Precautions for safe handling

Keep in tightly closed containers. Protect containers from physical damage. Avoid direct skin contact with the material.

Conditions for safe storage, including any incompatibilities

Store in a cool, dry, and well-ventilated location. Do not store near incompatible materials (see Section 10 below). Keep away from moisture. Long-term storage in aluminum containers is not recommended, as calcium oxide may corrode aluminum over long periods of time.

Section 8. Exposure controls/personal protection

Exposure limits

Component	CAS #	Exposure limits
Calcium Oxide	1305-78-8	OSHA PEL: 5mg/m ³ ACGIH TLV: 2mg/m ³
Magnesium Oxide	1309-48-4	OSHA PEL: 15mg/m ³ ACGIH TLV: 10mg/m ³
Crystalline Silica	14808-60-7	OSHA PEL: 0.050 mg/m ³ as an 8hr TWA (respirable) ACGIH TLV: 0.025 mg/m ³ (respirable)

US. NIOSH: Pocket Guide to Chemical Hazards

Material	Type	Value
Calcium oxide (CaO) (CAS 1305-78-8)	TWA	2 mg/m ³

Impurities	Type	Value	Form
Quartz (CAS 14808-60-7)	TWA	0.05 mg/m ³	Respirable dust.

Biological limit values No biological exposure limits noted for the ingredient(s).

Engineering controls : Provide ventilation adequate to maintain PELs.

Individual Protection Measures

Respiratory Protection :Use NIOSH/MSHA approved respirators if airborne concentration exceeds PEL.

If engineering controls do not maintain airborne concentrations below recommended exposure limits (where applicable) or to an acceptable level (in countries where exposure limits have not been established), an approved respirator must be worn. Wear NIOSH approved respirator appropriate for airborne exposure at the point of use.

Skin Protection : Use appropriate gloves to prevent skin contact. When there is a risk of skin contact, wear suitable clothing to prevent such contact. Clothing should fully cover arms and legs.

Eye Protection : Use safety glasses with side shields or safety goggles. Contact lenses should not be worn when working with lime products. When working with powders or dusts, wear dust-proof chemical goggles and face shield unless full facepiece respiratory protection is worn.

Other : Eye wash fountain and emergency showers are recommended
: Wear appropriate thermal protective clothing, when necessary.

Section 9. Physical and chemical properties

Physical State	: Solid
Appearance	: White or grayish-white material
Odor	: Odorless
Odor threshold	: Not applicable
pH at 25 degrees C	: 12.45
Melting point	: 4658°F, 2570°C
Initial boiling point	: 5162°F, 2850°C
Flash point	: Not applicable.
Evaporation rate	: Not applicable.
Flammability (solid, gas)	: Not applicable.
Lower and upper explosive (flammable) limits	: Not applicable.
Vapor pressure	: Not applicable.
Vapor density	: Not applicable.
Relative density	: Not applicable.
Solubility in water	: Negligible, but reacts with water to produce calcium hydroxide and heat
Partition coefficient: n octanol/water	: Not applicable.
Auto-ignition temperature	: Not applicable.
Decomposition temperature	: Not applicable.
Viscosity	: Not applicable.

Section 10. Stability and reactivity

Reactivity	: Quicklime reacts violently with water to form calcium hydroxide, releasing heat. See also Incompatibility below
Chemical stability	: Quicklime is chemically stable
Possibility of hazardous reactions	: See above
Conditions to avoid	: Do not allow quicklime to come in contact with incompatible materials. The substance is hygroscopic and will absorb water by contact with the moisture in the air.
Incompatible materials	: Quicklime should not be mixed or stored with the following materials, due to the potential for violent reaction and release of heat: WATER ACIDS REACTIVE FLUORIDATED COMPOUNDS REACTIVE BROMINATED COMPOUNDS REACTIVE POWDERED METALS ALUMINUM POWDER ORGANIC ACID ANHYDRIDES NITRO-ORGANIC COMPOUNDS

REACTIVE PHOPHOROUS COMPOUNDS
INTERHALOGENATED COMPOUNDS

Hazardous decomposition products : None

Section 11. Toxicological Information

Information on the likely routes of exposure: See First Aid discussion in Section 4.

Symptoms related to the physical, chemical and toxicological characteristics: See First Aid discussion in Section 4.

Delayed and immediate effects and also chronic effects from exposure: See First Aid in Section 4.

Carcinogen listing: Quicklime is not listed by MSHA, OSHA, or IARC as a carcinogen, but this product contains crystalline silica, which has been classified by IARC as (Group I) carcinogenic to humans when inhaled

Toxicological data

IARC Monographs. Overall Evaluation of Carcinogenicity

Quartz (CAS 14808-60-7) 1 Carcinogenic to humans.

NTP Report on Carcinogens

Quartz (CAS 14808-60-7) Known To Be Human Carcinogen.

OSHA Specifically Regulated Substances (29 CFR 1910.1001-1053)

Quartz (CAS 14808-60-7) Cancer

Reproductive toxicity	This product is not expected to cause reproductive or developmental effects.
Specific target organ toxicity - single exposure	May cause respiratory irritation.
Specific target organ toxicity - repeated exposure	Not classified.
Aspiration hazard	Not an aspiration hazard.
Chronic effects	Prolonged inhalation may be harmful.

Section 12. Ecological information

Ecotoxicity	: Because of the high pH of this product, it would be expected to produce significant ecotoxicity upon exposure to aquatic organisms and aquatic systems in high concentrations.
Persistence and degradability	: Reacts with atmospheric CO ₂ over time to form calcium carbonate. The product solely consists of inorganic compounds which are not biodegradable.
Bioaccumulative potential	: This material shows no bioaccumulation effects of food chain concentration toxicity.
Mobility in soil	: There is no data available.
Other adverse effects	: This material is alkaline and if released into water or moist soil will cause an increase in pH.

SARA EHS (Extremely Hazardous Substance) (40 CFR 355): Not listed, Threshold Planning Quantity (TPQ): not listed

Specific State Regulations: Consult State and Local authorities for guidance.

State Regulations:

Consult state and local authorities for guidance.

California Proposition 65



WARNING: This product can expose you to SILICA, CRYSTALLINE QUARTZ, which is known to the State of California to cause cancer. For more information go to www.P65Warnings.ca.gov.

These naturally occurring impurities may also regulated by other States.

Canadian DSL: Listed

Canadian NPRI: None of the components are listed

CEPA Toxic Substance: None of the components are listed

Section 16. Other information

History

Date of issue (mm/dd/yyyy) : 06/01/2015

Revision date (mm/dd/yy) : 09/30/2019

Version : 2

Disclaimer: The information contained in this document applies to this specific material as supplied. Pete Lien & Sons, Inc. believes that the information contained in this SDS is accurate. The suggested precautions and recommendations are based on recognized good work practices and experience as of the date of publication. They are not necessarily all-inclusive or fully adequate in every circumstance as not all use circumstances can be anticipated. The suggestions should not be confused with nor followed in violation of applicable laws, regulation, rules or insurance requirement.

It is the user's responsibility to satisfy oneself as to the suitability and completeness of this information for one's own particular use. Since the actual use of the product described herein is beyond our control, Pete Lien & Sons, Inc. , assumes no liability arising out of the use of the product by others. Appropriate warnings and safe handling procedures should be provided to handlers and users. Product must not be used in a manner which could result in harm.



1602 Park West Dr. • PO Box 169 • Hastings, NE 68902
www.servitech.com

Phone: 402.463.3522 • 800.557.7509 • Fax: 402.463.8132

LABORATORY REPORT

Lab #: H-2022NL004840

Report Date: 08/25/2022 01:02 pm

Send To: CITY OF GRAND ISLAND
20519 ATTN: LAB
PLATTE GENERATING STATION
Bill To: 1035 W WILDWOOD DR
32275 GRAND ISLAND, NE 68801

Nancy Jenny
Nancy Jenny
Data Review Coordinator

Date/Time Received: 08/19/2022
Name of Submitter:
Date/Time Sampled: 08/19/2022
Name of Sampler:

Project ID:
Project Title:
Sample ID: SCRUBBER ASH
Client Name: PLATTE GENERATING STATION
Subject: Solids Lab Analysis

Location: RE: FERTILIZER LAB #61
Invoice No: 985032
P.O. #:
Depth:
Flow Rate:

Analysis	Result	Unit	RL	Method	Analysis Date/Time	Tech
Accredited Tests						
Nitrate+Nitrite Nitrogen, NO3+NO2-N	4.3	mg/kg	AR	EPA 353.2	8/22/2022 4:18PM	NJJ
Total Kjeldahl Nitrogen, TKN	80	mg/L	AR	SM 4500-NH3 C-1997	8/23/2022 1:30PM	TLR
Organic Nitrogen	78	mg/kg	AR	Calculation		
Total Nitrogen, N	82.30	mg/kg	AR	Calculation		
Phosphorus as P2O5	554.7754	mg/L		Calculation		
Aluminum, Al	1320	mg/kg		EPA 3050B / EPA 6010 B	8/24/2022 11:09AM	TLR
Arsenic, As	3.14	mg/kg		EPA 3050B / EPA 6010 B	8/24/2022 10:29AM	TLR
Boron, B	23.3	mg/kg		EPA 3050B / EPA 6010 B	8/24/2022 10:29AM	TLR
Cadmium, Cd	0.24	mg/kg		EPA 3050B / EPA 6010 B	8/24/2022 10:29AM	TLR
Calcium, Ca	270000	mg/kg		EPA 3050B / EPA 6010 B	8/24/2022 2:10PM	TLR
Chromium, Cr	3.48	mg/kg		EPA 3050B / EPA 6010 B	8/24/2022 10:29AM	TLR
Copper, Cu	3.73	mg/kg		EPA 3050B / EPA 6010 B	8/24/2022 10:29AM	TLR
Iron, Fe	570	mg/kg	20	EPA 3050B / EPA 6010 B	8/24/2022 11:09AM	TLR

Test Basis: AR=As Received 1:1=In 1:1 Water Extract

RL = Reporting Limit ND = Not Detected at RL

The reported analytical results apply only to the sample as it was supplied. The report may not be reproduced, except in full, without permission of ServiTech. Your opinion is valuable to us. Please let us know what you think about our services! Send an email to feedback@servitech.com.



1602 Park West Dr. • PO Box 169 • Hastings, NE 68902
www.servitech.com

Phone: 402.463.3522 • 800.557.7509 • Fax: 402.463.8132

Lab #: H-2022NL004840

LABORATORY REPORT

Report Date: 08/25/2022 01:02 pm

Analysis	Result	Unit	RL	Method	Analysis Date/Time	Tech
Lead, Pb	1.10	mg/kg	0.40	EPA 3050B / EPA 6010 B	8/24/2022 10:29AM	TLR
Magnesium, Mg	990	mg/kg	2.0	EPA 3050B / EPA 6010 B	8/24/2022 1:50PM	TLR
Manganese, Mn	41.9	mg/kg	NA	EPA 3050B / EPA 6010 B	8/24/2022 10:29AM	TLR
Molybdenum, Mo	0.31	mg/kg	0.08	EPA 3050B / EPA 6010 B	8/24/2022 10:29AM	TLR
Nickel, Ni	1.31	mg/kg	0.20	EPA 3050B / EPA 6010 B	8/24/2022 10:29AM	TLR
Phosphorus, P	242.26	mg/kg	0.80	EPA 3050B / EPA 6010 B	8/24/2022 1:50PM	TLR
Potassium, K	230	mg/kg	2.0	EPA 3050B / EPA 6010 B	8/24/2022 1:50PM	TLR
Sodium, Na	696	mg/kg	2.0	EPA 3050B / EPA 6010 B	8/24/2022 1:50PM	TLR
Sulfur, S	97300	mg/kg	20	EPA 3050B / EPA 6010 B	8/24/2022 2:02PM	TLR
Zinc, Zn	4.41	mg/kg	0.08	EPA 3050B / EPA 6010 B	8/24/2022 10:29AM	TLR
pH, at 21.6°C	11.44	unit 1:1	NA	EPA 9045 C	8/19/2022 4:10PM	MSM
Total Solids, TS	73.2	% AR	0.01	SM 2540 G-1997	8/22/2022 2:26PM	TLH
Volatile Solids, VS	1.07	% AR	0.01	SM 2540 G-1997	8/22/2022	TLH
Fixed Solids (Ash), FS	72.1	%	0.01	SM 2540 G-1997	8/25/2022 12:59PM	
Ammonium Nitrogen, NH4-N	ND	mg/kg AR	1.0	EPA 350.1	8/23/2022 10:54AM	TLH
Non-Accredited Tests						
Potassium as K2O	276	mg/L	2.4	Calculation		

Result Notes

¹ The sample was not analyzed within the regulatory holding time for this analyte.

Test Basis: AR=As Received 1:1=In 1:1 Water Extract

ND = Not Detected at RL

The reported analytical results apply only to the sample as it was supplied. The report may not be reproduced, except in full, without permission of ServiTech. Your opinion is valuable to us. Please let us know what you think about our services! Send an email to feedback@servitech.com.



1602 Park West Dr. • PO Box 169 • Hastings, NE 68902
www.servitech.com

Phone: 402.463.3522 • 800.557.7509 • Fax: 402.463.8132

Lab #: HI-2022NL004840

LABORATORY REPORT

Report Date: 08/25/2022 01:02 pm

Additional Information

Analysis	Result	100% Dry Matter	lbs/ Ton
Nitrate+Nitrite Nitrogen, NO3+NO2-N	4.3 mg/kg	5.9	<0.1
Total Kjeldahl Nitrogen, TKN	80 mg/L	110	0.2
Organic Nitrogen	78 mg/kg	106.56	0.2
Total Nitrogen, N	82.30 mg/kg	112.43	0.2
Phosphorus as P2O5	554.7754 mg/L	554.7754	1.1
Potassium as K2O	276 mg/L	276	0.6
Aluminum, Al	1320 mg/kg	1320	2.6
Arsenic, As	3.14 mg/kg	3.14	<0.1
Boron, B	23.3 mg/kg	23.3	<0.1
Cadmium, Cd	0.24 mg/kg	0.24	<0.1
Calcium, Ca	270000 mg/kg	270000	540.0
Chromium, Cr	3.48 mg/kg	3.48	<0.1
Copper, Cu	3.73 mg/kg	3.73	<0.1
Iron, Fe	570 mg/kg	570	1.1
Lead, Pb	1.10 mg/kg	1.10	<0.1
Magnesium, Mg	990 mg/kg	990	2.0
Manganese, Mn	41.9 mg/kg	41.9	<0.1
Molybdenum, Mo	0.31 mg/kg	0.31	<0.1
Nickel, Ni	1.31 mg/kg	1.31	<0.1
Phosphorus, P	242.26 mg/kg	242.26	0.5
Potassium, K	230 mg/kg	230	0.5
Sodium, Na	696 mg/kg	696	1.4
Sulfur, S	97300 mg/kg	97300	194.6
Zinc, Zn	4.41 mg/kg	4.41	<0.1
pH, at 21.6°C	11.44 unit		
Total Solids, TS	73.2 %	100	1464
Volatile Solids, VS	1.07 %	1.46	21.4
Fixed Solids (Ash), FS	72.1 %	72.1	1442.0
Ammonium Nitrogen, NH4-N	ND mg/kg	<1.4	<0.1

Test Basis: AR=As Received 1:1=In 1:1 Water Extract

ND = Not Detected at RL

The reported analytical results apply only to the sample as it was supplied. The report may not be reproduced, except in full, without permission of ServiTech. Your opinion is valuable to us. Please let us know what you think about our services! Send an email to feedback@servitech.com.



1602 Park West Dr. • PO Box 169 • Hastings, NE 68902
www.servitech.com

Phone: 402.463.3522 • 800.557.7509 • Fax: 402.463.8132

Lab #: H-2022NL004840

LABORATORY REPORT

Report Date: 08/25/2022 01:02 pm

Sample Acceptability Criteria

The pH result is out of the calibration range.

Accreditation Agency

Iowa DNR
EPA

Accreditation Number

State Lab ID 400
EPA ID No. NE00003

ND = Not Detected at RL

Test Basis: AR=As Received 1:1=In 1:1 Water Extract

Page 4 of 4

The reported analytical results apply only to the sample as it was supplied. The report may not be reproduced, except in full, without permission of ServiTech.
Your opinion is valuable to us. Please let us know what you think about our services! Send an email to feedback@servitech.com.